

DC BIAS PASSING ATTENUATORS

500 MHz - 2 GHz

100 Volts



MODELS: 9093-N-10, 9093-N-20, 9093-SMA-10, 9093-SMA-20, 9093-TNC-10 and 9093-TNC-20

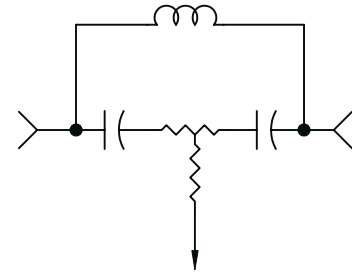
SPECIFICATIONS:

Electrical: (@ 25°C Ambient)

Frequency Range _____ 500 MHz - 2 GHz
Standard dB Values* _____ 4, 6, 10 & 20 dB
Attenuation Accuracy _____ ± 1.0 dB Typ. (± 2.0 dB Max.)
Impedance _____ 50 Ohms
VSWR _____ 1.35:1 Max.
Voltage Rating _____ 100 Volts Max.
DC Current _____ 2 Amps. Max.
RF Power (Avg) _____ 2 Watts Max.
Operating Temp. Range _____ -55°C to +125°C

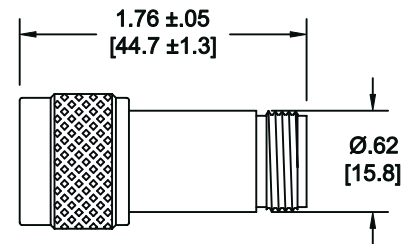
Mechanical:

Connectors _____ Passivated Stainless Steel
Mates With MIL-STD-348
Conductors _____ Gold Plated Beryllium Copper

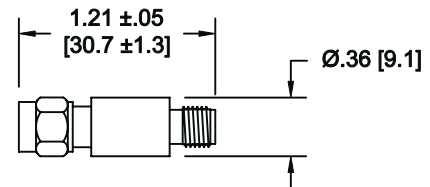


SCHEMATIC DIAGRAM

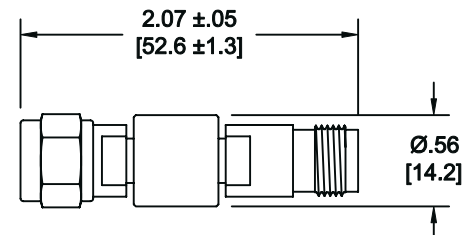
Model Number: **9093-N-XX**
Type N Connectors



Model Number: **9093-SMA-XX**
SMA Connectors



Model Number: **9093-TNC-XX**
TNC Connectors



HOW TO ORDER:

Model Number: **9093-YYY-XX**
Connector Type dB Value
N = Type N
SMA = SMA
TNC = TNC

Ordering Examples:

Model Number: **9093-N-10**
10 dB; Type N; Male/Fem

Model Number: **9093-TNC-20**
20 dB; TNC; Male/Fem

Note: Dimensions in Brackets are Expressed in Millimeters and are for Reference Only.
*Other dB values available for special order.

9093; REV D