

# HJ-9003

800 to 980 MHz

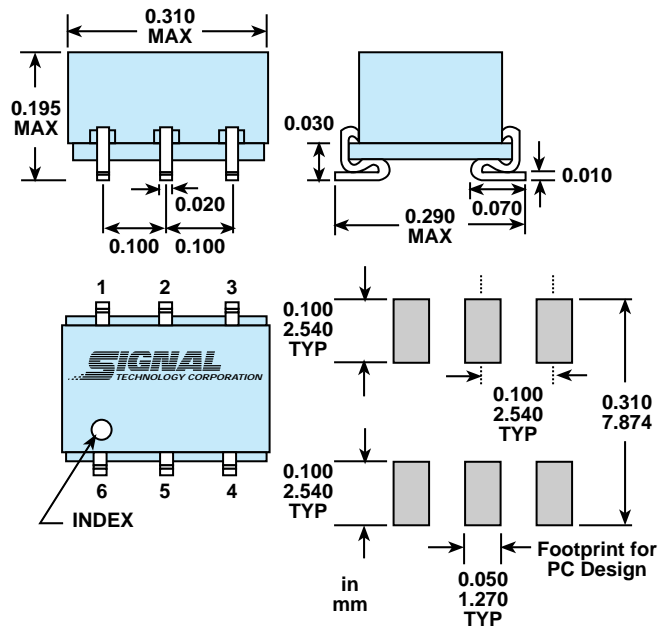
2-Way 0° Surface Mount  
Power Divider/Combiner



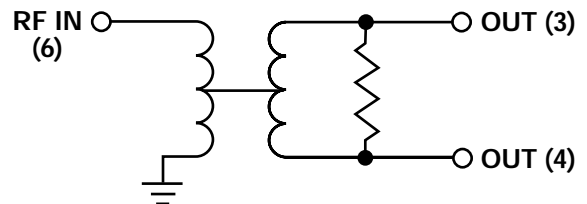
## Guaranteed Specifications (-55 to +85°C)

Frequency Range	800-980 MHz
Isolation	18 dB min.
Insertion Loss	1.0 dB max.
VSWR	1.4:1 max.
Phase Balance	±3° max.
Amplitude Balance	0.50 dB max.
Impedance	50 Ohms nominal
Power Handling	3 Watts max.

## Mechanical Outline



## Functional Schematic



**SIGNAL**  
TECHNOLOGY CORPORATION

OLEKTRON OPERATION

28 Tozer Road • Beverly, MA 01915-5579  
Tel. 508.922.0019 • Fax 508.927.9328