

LCM155W-20A

2.5 Gb/s Co-packaged Etalon Stabilised Laser and III-V Mach-Zehnder

Features

Voltage programmable output power control.

Very long haul performance with negligible penalty.

Integral Etalon wavelength stabilisation to within $\pm 20\text{pm}$ over life

Single 50 Ohm low voltage drive modulation input.

Integral thermo-electric cooler with precision NTC thermistor for temperature control.

Hermetically sealed 14 pin butterfly package with optical isolator.

ITU Wavelengths available from 1530nm to 1560nm.

Applications

Long and very long reach SONET/SDH STM16/OC48 systems
DWDM systems to 50GHz channel spacing

Description

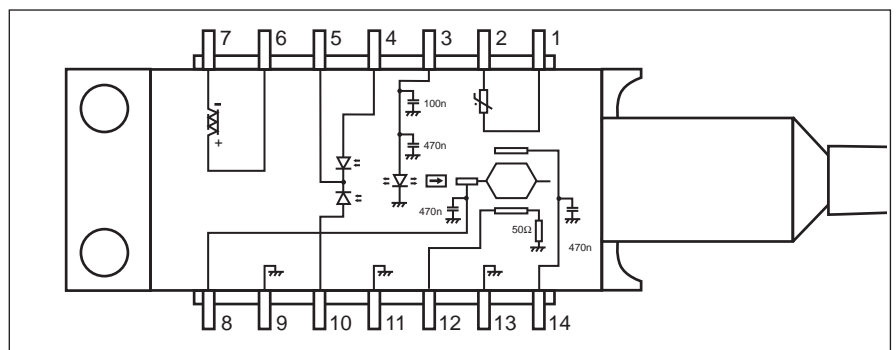
Designed for long reach 2.5Gb/s DWDM systems, the LCM155W-20A comprises a wavelength stabilized Laser, an integral III-V Mach-Zehnder modulator and voltage-controlled output power.

The device incorporates two monitor photodiodes, each with a different spectral characteristic. When used with closed loop control, wavelength

stability of $\pm 20\text{pm}$ may be achieved.

The voltage controlled attenuator function may be used to set the desired output power.

When used on standard fibre (or any fibre with a positive dispersion coefficient), a 1dB dispersion penalty is achieved with 12800ps/nm dispersion.



LCM155W-20A

Characteristics

Conditions unless otherwise stated: Submount temperature $30^{\circ}\text{C} \pm 5^{\circ}\text{C}$ (for locked λ)
Monitor diode bias -5V

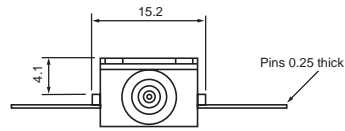
Parameter	Conditions	Min	Typ	Max	Unit
Submount temperature		25		35	$^{\circ}\text{C}$
Forward current				250	mA
Modulated output power (1)	50% duty	0.5		4.0	dBm
Modulated output power (2)	at $T_{\text{case}} = 30^{\circ}\text{C}$			-12.0	dBm
Case temperature tracking error	$T_{\text{case}} 0 - 70^{\circ}\text{C}$ Constant wavelength			1	dB
Ageing error	Constant wavelength			0.5	dB
Laser forward voltage				2.75	V
Line width	CW FWHM		2	20	MHz
SMSR	At rated power	40			dB
Modulation voltage	AC pp	1.5		3	V
Drive bias voltage		-3.0		-0.5	V
Fixed arm bias voltage		-3.0		0	V
Extinction ratio		13			dB
RIN				-140	dB/Hz
Locking photo current		0.2		2.0	mA
Monitor dark current				100	nA
Heatpump current	70°C case/ 25°C chip			1.2	A
RF Return loss S11	0 - 2.5GHz			13	dB
3dB Bandwidth S21		3			GHz

Note (1) Start of life, power adjustment set for maximum output.
(2) Start of life, power adjustment set to -7.3V.

Absolute Ratings

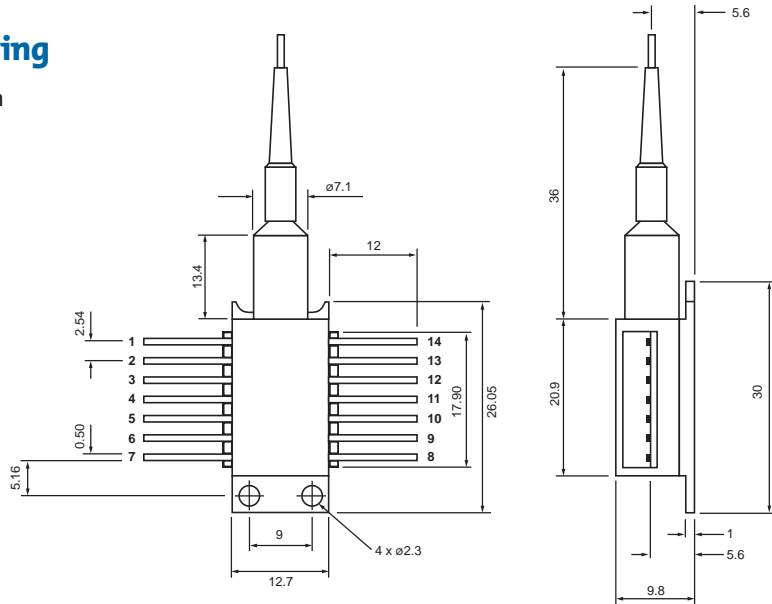
Parameter	Conditions	Min	Typ	Max	Unit
Case operating temperature		0		+70	$^{\circ}\text{C}$
Storage temperature		-40		+85	$^{\circ}\text{C}$
Laser forward current above I_{th}				300	mA
Laser reverse voltage				2	V
Monitor diode bias				-18	V
Fibre bend radius		30			mm
Modulation input	AC + DC bias			6	V
Power tuning pin	reverse bias	-8		0	V
Power tuning pin	Reverse current	0		27	mA

LCM155W-20A
2.5 Gb/s Co-packaged Etalon Stabilised
Laser and III-V Mach-Zehnder



Outline Drawing

Dimensions in mm
Tolerances ± 0.25
Finish : Gold plate



Instructions for Use - LCM155W-20A

Pin 1 and Pin 2 Thermistor

The thermistor is used in the control loop for keeping the internal temperature at a constant value. It has a nominal resistance of 8.2 k Ω at the typical operating temperature of 30 °C and is not polarity sensitive. Operating current should be limited to less than 100 μ A to prevent self-heating errors. The exact thermistor value will be supplied with the LCM155W variant to ensure correct operating wavelength.

Pin 3 Laser Bias (+) (Anode)

Laser bias current (positive with respect to package ground) is applied via this pin, which is internally decoupled to ground. The laser is operated with a forward bias current up to 250 mA at 2.75 V (typical). Threshold current is typically 30 mA at 30 °C. Laser cathode is internally connected to case ground.

Pin 4 Monitor Anode (short), Pin 10 Monitor Anode (long) and Pin 5 Monitor Cathodes

The two back facet monitor diodes are used in a control loop, which maintains constant laser wavelength. Each diode

has a different spectral response, which overlaps at the “locked” wavelength. The loop can control submount temperature and/or laser bias current to maintain the two monitor diode currents at equal values, corresponding to the locked wavelength. The diode cathodes are commoned on pin 5 and are operated with a reverse 5 V bias.

Pin 6 TEC (+) and Pin 7 TEC (-)

Applying a positive voltage on Pin 6 with respect to Pin 7 will cause the internal optics to be cooled relative to the case temperature. Reversing the applied voltage will cause the internal structures to be heated. The power supply for the heatpumps should be capable of sourcing up to 1.2 A at 5 V.

Pin 8 Power Adjust

A negative DC voltage in the range 0 V to -7.3 V applied to this pin will attenuate the output power by up to 20 dB. The supply should be capable of sinking up to 30 mA from this pin.

Pin 9, 11, 13 Package Ground

Pins 11 and 13 specifically need to be good RF grounds, since these pin

positions are on either side of the RF input.

Pin 12 Data Input

This pin provides both the DC bias to the MZ and the data input (modulation voltage). The DC bias value and required modulation voltage are supplied with the device. The DC bias source is required to deliver about -2.0 V at up to 10 mA and should be connected via an inductor. The modulation input has characteristic impedance of 50 Ω and should be AC coupled to a suitable driver using 50 Ω tracks. Modulation voltage for optimum extinction ratio is supplied with the device and may be up to 3.0 V_{pp}.

Pin 14 MZ Bias

DC bias voltage for the fixed MZ arm. This pin must be connected to a negative DC voltage (typically around -2.0 V) which is defined in the deliverable data. The bias voltage source must be capable of delivering up to 10 mA to this pin.

LCM155W-20A
2.5 Gb/s Co-packaged Etalon Stabilised
Laser and III-V Mach-Zehnder

LCM155W-20A

Connections

Pin 1	Thermistor	Pin 14	Bias for fixed MZ arm
2	Thermistor	13	Ground
3	Laser bias (+)	12	Data (DC coupled)
4	BFM Anode short	11	Ground
5	BFM Cathode	10	BFM Anode long
6	Cooler (+)	9	Ground
7	Cooler (-)	8	Power adjust

Device Ordering Information

Order Code No. LCM155W**** - 20A (Connector Type)

Where **** = Last four digits of wavelength value i.e. for $\lambda_p = 1545.32\text{nm}$ **** = 4532

For wavelength information see Nortel Networks WDM wavelength plan.

Connector type SC = C28, FC/PC = C33, no suffix = 2.5mm o.d ceramic ferrule (Std)

An Applications Note AN0002 is also available for this device.

Nortel Networks High Performance Optical Component Solutions

Brixham Road
Paignton
Devon
TQ4 7BE
United Kingdom
Tel: +44 1803 662106
Fax: +44 1803 662801

Email: opticalcomponents@nortelnetworks.com
www.nortelnetworks.com/hpocs

All data in this document is subject to change in accordance with Nortel Networks Corporation policy of continual product improvement. No data in this document is intended to be used in connection with any contract except as may be first confirmed in writing by Nortel Networks Corporation. The publication of information in this document does not imply freedom from patent or other rights of Nortel Networks Corporation or others.

© 2000 Nortel Networks. All rights reserved.

© Nortel Networks, Nortel Networks Logo, the Globemark and Unified Networks are trademarks of Nortel Networks.

Information in this document is subject to change without notice. Nortel Networks assumes no responsibility for errors that might appear in this document. Printed in England.

NORTEL
NETWORKS™



REFERENCE IEC 825-1:1993



THIS PRODUCT COMPLIES WITH 21 CFR 1040.10

CAUTION - USE OF CONTROLS OR ADJUSTMENTS OR PERFORMANCE OF PROCEDURES OTHER THAN THOSE SPECIFIED HEREIN MAY RESULT IN HAZARDOUS RADIATION EXPOSURE

