

MYA 800 MHz Series Yagi Antennas

The MYA 800 MHz Yagis are unsurpassed in their price to performance ratio. All feature rugged 6061-T6 seamless aluminum construction, stainless steel hardware, and through boom mounting of all elements for years of reliable service. All elements are DC grounded to the boom and all models are UPS shippable.

Features:

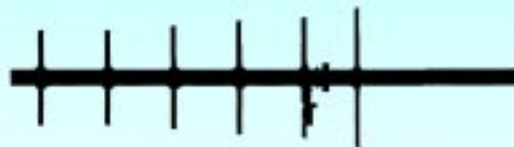
- ◆ Stainless steel hardware
- ◆ Factory assembled and tuned
- ◆ Stacking harness available for phasing two or more antennas (see Base Station accessory section)
- ◆ (B) Black finish available on select models

Electrical Specifications

MYA 800 MHz Series, Aluminum Yagi

Model #	Frequency Range	Factory Tuned Frequency	Gain	Bandwidth @ 1.5:1 VSWR	Horizontal Beamwidth @ 1/2 Power	Vertical Beamwidth @ 1/2 Power	Front to Back Ratio
(B)MYA-8063	806-866 MHz	813 MHz	6dB	35 MHz	72°	57°	15dB
(B)MYA-8253	824-896 MHz	835 MHz	6dB	35 MHz	72°	57°	15dB
MYA-8503	806-866 MHz	858 MHz	6dB	35 MHz	72°	57°	15dB
MYA-8703	824-896 MHz	880 MHz	6dB	35 MHz	72°	57°	15dB
(B)MYA-8066	806-866 MHz	813 MHz	9dB	60 MHz	42°	40°	16dB
MYA-8066(PTU)	806-866 MHz	813 MHz	9dB	60 MHz	42°	40°	16dB
(B)MYA-8256	824-896 MHz	835 MHz	9dB	73 MHz	42°	40°	16dB
MYA-8506	806-866 MHz	858 MHz	9dB	60 MHz	42°	40°	16dB
MYA-8706	824-896 MHz	880 MHz	9dB	73 MHz	42°	40°	16dB
(B)MYA-80612	806-866 MHz	813 MHz	11dB	60 MHz	36°	34°	20dB
(B)MYA-82512	824-896 MHz	835 MHz	11dB	73 MHz	36°	34°	20dB
MYA-85012	806-866 MHz	858 MHz	11dB	60 MHz	36°	34°	20dB
MYA-87012	824-896 MHz	880 MHz	11dB	73 MHz	36°	34°	20dB

Prefix "B" indicates black



BMYA-8066

MYA 800 MHz Series Yagi Antennas

General Specifications for MYA 800 MHz Series

Radiator Material:

3/8" solid 6061-T6 aluminum

Termination:

"N" female; MYA-8066(PTU)-PL259

Lightning Protection:

DC grounded

Wind Survival:

125 mph

Maximum Mount Pipe Diameter:

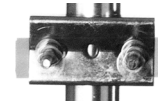
1 5/8"

Maximum Power:

150 watts

Nominal Impedance:

50 Ohms



MYK-1

Mechanical Specifications

MYA 800 MHz Series, Aluminum Yagi

Model #	Equivalent Flat Plate Area	Lateral Thrust @ Rated Wind	Bending Moment @ Rated Wind	Elements	Weight	Mounting Hardware (Included)	Boom Length	Boom Diameter
(B)MYA-8063	.10 sq ft	6.5 lbs	4.6 ft-lbs	3	1.5 lbs	MYK1	17"	7/8"
(B)MYA-8253	.10 sq ft	6.5 lbs	4.6 ft-lbs	3	1.5 lbs	MYK1	17"	7/8"
MYA-8503	.10 sq ft	6.5 lbs	4.6 ft-lbs	3	1.5 lbs	MYK1	17"	7/8"
MYA-8703	.10 sq ft	6.5 lbs	4.6 ft-lbs	3	1.5 lbs	MYK1	17"	7/8"
(B)MYA-8066	.17 sq ft	10.7 lbs	12.5 ft-lbs	6	2 lbs	MYK1	28"	7/8"
MYA-8066PTU	.17 sq ft	10.7 lbs	12.5 ft-lbs	6	2 lbs	MYK1	28"	7/8"
(B)MYA-8256	.17 sq ft	10.7 lbs	12.5 ft-lbs	6	2 lbs	MYK1	28"	7/8"
MYA-8506	.17 sq ft	10.7 lbs	12.5 ft-lbs	6	2 lbs	MYK1	28"	7/8"
MYA-8706	.17 sq ft	10.7 lbs	12.5 ft-lbs	6	2 lbs	MYK1	28"	7/8"
(B)MYA-80612	.29 sq ft	17.8 lbs	35.6 ft-lbs	12	2.5 lbs	MYK1	48"	7/8"
(B)MYA-82512	.29 sq ft	17.8 lbs	35.6 ft-lbs	12	2.5 lbs	MYK1	48"	7/8"
MYA-85012	.29 sq ft	17.8 lbs	35.6 ft-lbs	12	2.5 lbs	MYK1	48"	7/8"
MYA-87012	.29 sq ft	17.8 lbs	35.6 ft-lbs	12	2.5 lbs	MYK1	48"	7/8"

Prefix "B" indicates black



MYA-8063