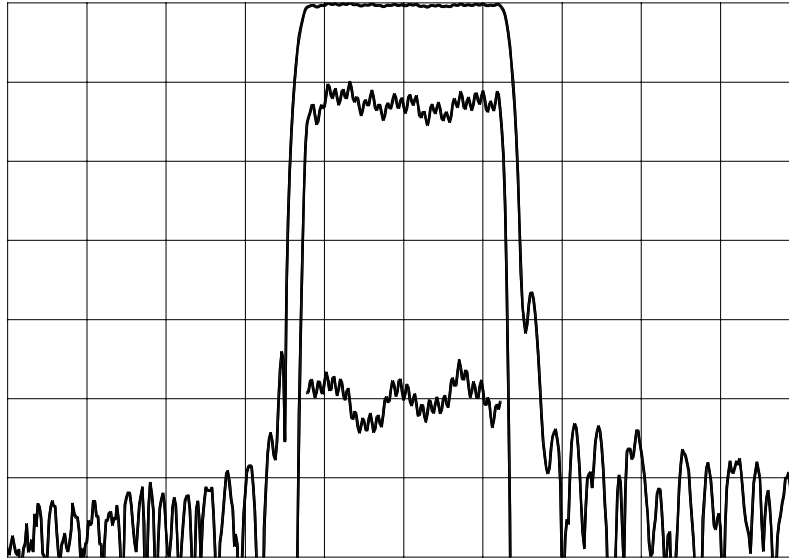


TYPICAL PERFORMANCE


Horizontal: 0.5 MHz/div

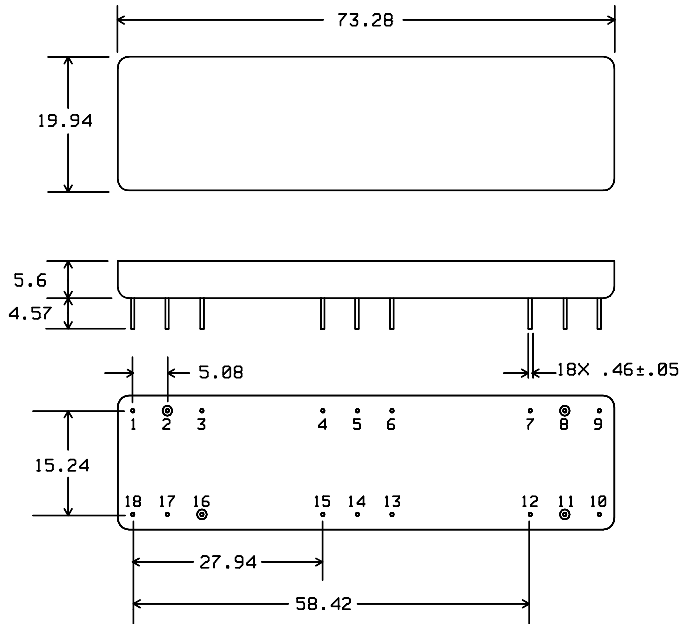
 Vertical (from top): Magnitude 10 dB/div
 Magnitude 1 dB/div
 Phase 5 deg/div

SPECIFICATION

Parameter	Min	Typ	Max	Units
Center Frequency (Fc)		69.99		MHz
Insertion Loss		20.2	22	dB
Lower 1.5 dB Frequency		69.35	69.36	MHz
Upper 1.5 dB Frequency	70.62	70.63		MHz
Lower 35 dB Frequency	69.24	69.25		MHz
Upper 35 dB Frequency		70.73	70.74	MHz
Ultimate Rejection at $F_c \pm 0.90$ MHz	50	55		dB
Triple Transit Suppression	30	40		dB
Passband Amplitude Ripple		0.5	0.7	dB p-p
Passband Phase Linearity ²		4	10	deg p-p
Operating Temperature	-5	23	+65	°C
Source and Load Impedance		50		Ω

Notes: 1. Over center 1.23 MHz.

PACKAGE OUTLINE

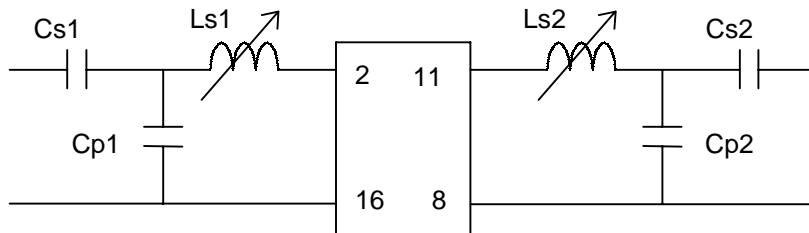


Units: mm

Pin Configuration:

Input: 2
 Output: 11
 Output Return: 8
 Ground: 1,3,4,5,6,7,9,10,12,13,14,15,16,17,18

MATCHING CIRCUIT



Typical component values: Ls1 = 150 nH ± 6% Cp1 = 75 pF Cs1 = 47 pF
 (minimum inductor Q = 50) Ls2 = 150 nH ± 6% Cp2 = 82 pF Cs2 = 47 pF

- Notes - Requires 2% matching components.
 - Component values may change depending on board layout.

ISO 9001
Registered

Micro Networks Corporation

Worldwide Headquarters ■ 324 Clark Street ■ Worcester, MA 01606 ■ tel: 508-852-5400 ■ fax: 508-852-8456
European Sales Headquarters ■ Hertosingel 20 ■ 6214 AD Maastricht ■ The Netherlands ■ tel: +31-43-32-70915 ■ fax: +31-43-32-70715
www.micronetworks.com