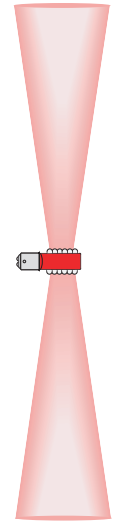




15mm Double Side Right Angle SC Bayonet Based LEDs

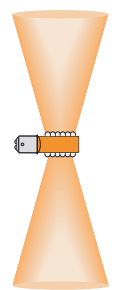
Packages	Replaces Incandescent	Part Number	Input Voltage	Power Watts (typ)	Intensity per LED I_v mcd (typ)	λ_p (nm)	View Angle 2 $\theta_{1/2}$	Special Features
633nm Super Red InGaAlP	310,312	BR632-0ER-014N	12/14V	1.2W to 2.0W	3500	630	12° to 15°	Replace N in part number with required viewing angle
		BR632-0ER-024N	24V					S - Standard (25° to 30°)
		BR632-0ER-028N	28V					M - Medium (45° to 50°)
		BR632-0ER-036N	36V					W - Wide (120° to 125°)
612nm Super Orange InGaAlP	310,312	BR632-0UO-014N	12/14V	1.2W to 2.0W	6500	612	12° to 15°	Replace N in part number with required viewing angle
		BR632-0UO-024N	24V					S - Standard (25° to 30°)
		BR632-0UO-028N	28V					M - Medium (45° to 50°)
		BR632-0UO-036N	36V					W - Wide (120° to 125°)
595nm Super Yellow InGaAlP	310,312	BR632-0UY-014N	12/14V	1.2W to 2.0W	5500	595	12° to 15°	Replace N in part number with required viewing angle
		BR632-0UY-024N	24V					S - Standard (25° to 30°)
		BR632-0UY-028N	28V					M - Medium (45° to 50°)
		BR632-0UY-036N	36V					W - Wide (120° to 125°)
8000K Cool White SiC/GaN	310,312	BR632-0CW-014N	12/14V	1.2W to 2.0W	6000	8000K	12° to 15°	Replace N in part number with required viewing angle
		BR632-0CW-024N	24V					S - Standard (25° to 30°)
		BR632-0CW-028N	28V					M - Medium (45° to 50°)
		BR632-0CW-036N	36V					W - Wide (120° to 125°)
525nm Aqua Green SiC/GaN	310,312	BR632-0UG-014N	12/14V	1.2W to 2.0W	1000	570	12° to 15°	Replace N in part number with required viewing angle
		BR632-0UG-024N	24V					S - Standard (25° to 30°)
		BR632-0UG-028N	28V					M - Medium (45° to 50°)
		BR632-0UG-036N	36V					W - Wide (120° to 125°)
505nm Blue Green SiC/GaN	310,312	BR632-0AG-014N	12/14V	1.2W to 2.0W	10,000	525	12° to 15°	Replace N in part number with required viewing angle
		BR632-0AG-024N	24V					S - Standard (25° to 30°)
		BR632-0AG-028N	28V					M - Medium (45° to 50°)
		BR632-0AG-036N	36V					W - Wide (120° to 125°)
470nm Super Blue SiC/GaN	310,312	BR632-0PB-014N	12/14V	1.2W to 2.0W	3000	470	12° to 15°	Replace N in part number with required viewing angle
		BR632-0PB-024N	24V					S - Standard (25° to 30°)
		BR632-0PB-028N	28V					M - Medium (45° to 50°)
		BR632-0PB-036N	36V					W - Wide (120° to 125°)
BR632-0PB-120AN	120VAC							

Viewing Angle: 12° to 15°



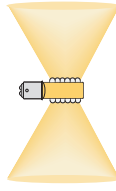
Narrow Angle (N)

Optional Viewing Angles: 25° to 30°



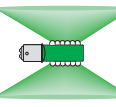
Standard Angle (S)

45° to 50°



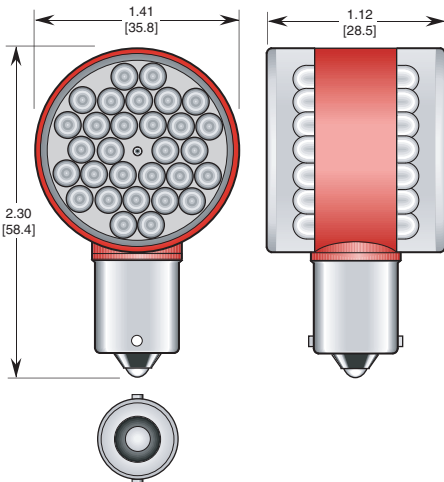
Medium Angle (M)

120° to 125°



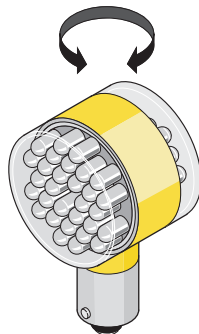
Wide Angle (W)

Dimensions



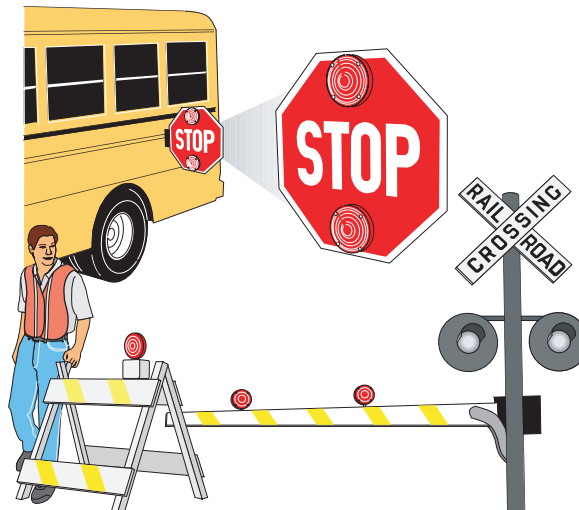
U.S. Patent No. 402,772

Options: (Adjustable Cluster)



PN Example: BRA-632-0ER-024V
MOL 2.50"
Base to LED CTR: 1.70"

Applications



Log # 123Y Rev 12-2000