

IQXO-899, -909

ISSUE 8; 30 JUNE 1998

Delivery Options

- Please contact our sales office for current leadtimes

Output Compatibility

- ECL 10kH (IQXO-899)
- Dual Complimentary ECL 10kH (IQXO-909)

Package Outline

- 14-pin DIL compatible resistance welded enclosure, hermetically sealed with glass to metal seals.

Standard Frequency Stabilities

- $\pm 50\text{ppm}$, $\pm 100\text{ppm}$
(inclusive of supply voltage variations over the operating temperature range)

Operating Temperature Range

- 0 to 70°C

Storage Temperature Range

- -55 to 125°C

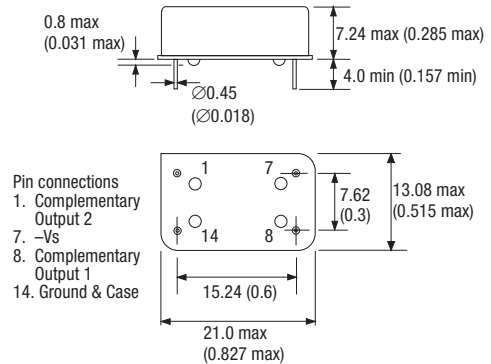
Marking

- Model number
- Frequency Stability Code
- Frequency
- Date code (Year/Week)

Minimum Order Information Required

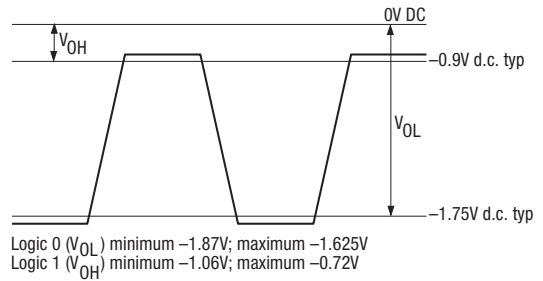
- Frequency + Model Number + Frequency Stability

Outline in mm (inches)

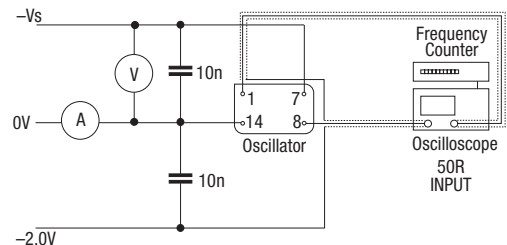


Note: Pin 1 = No connection on IQXO-899, Pin 8 = Ouput

Logic Levels



Test Circuit



Note: Pin 1 = No connection on IQXO-899

Electrical Specification – maximum limiting values when measured in test circuit

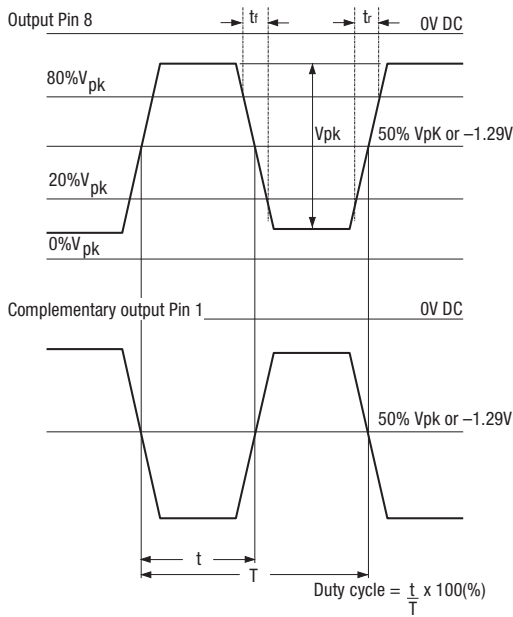
Frequency Range	Frequency Stability	Supply Voltage	Supply Current	Rise Time (t _r)	Fall Time (t _f)	Duty Cycle	Model Number
30.0 to < 70.0MHz	±50ppm ±100ppm	-5.2V±0.25V	60mA	2ns	2ns	40/60%	IQXO-899, -909
70.0 to < 125.0MHz	±50ppm ±100ppm	-5.2V±0.25V	60mA	2ns	2ns	40/60%	IQXO-899, -909
125.0 to < 200.0MHz	±50ppm ±100ppm	-5.2V±0.25V	60mA	2ns	2ns	40/60%	IQXO-899, -909

Note: ECL output require a pull-down resistor in the range 270Ω to 2kΩ to the most negative rail.

Ordering Example

Frequency _____ 125.0MHz _____ IQXO-899 _____ B
 Model No _____
 Frequency Stability: B = ±50ppm; C = ±100ppm _____

Output Waveform



SPXOs