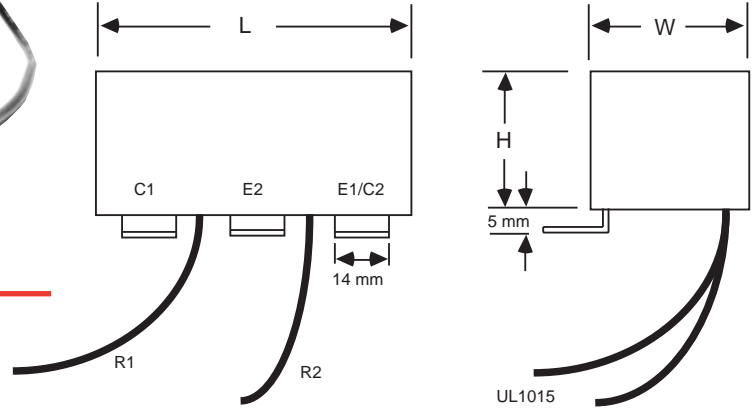


Type SCC, Dual IGBT Clamp-Snubber Modules

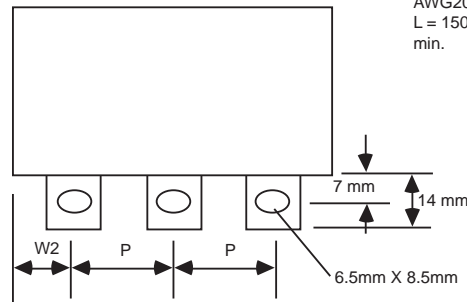
Style SCC

Applications

Style SCC is ideal for use in medium to high current applications where a dual IGBT module is used. This low loss snubber directly reduces turn-off voltage overshoots and is effective in reducing turn-on voltage transients.

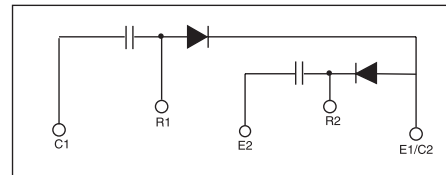
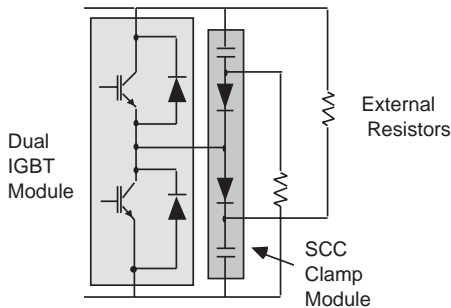


UL1015
AWG20
L = 150
min.



Highlights

- Mount directly to the IGBT module
- Low inductance
- Low loss polypropylene dielectric
- High peak current
- Hyperfast diodes integrated into package
- Wire taps for connecting external resistors
- Flame resistant case and epoxy meet UL 94VO



Pulse, Hi-Frequency
& Snubber
Capacitors

Part Number	Typical Application		Diode			Dimensions (in.)				
	Cap μF	DUAL IGBT Ic/Vce	Characteristics Vrrm/Io/trr(μs)	Ipk(A) Surge Tc = 25°C	Repetitive 20 kHz Sq Wave	W	L	H	W2	P(mm)
SCC105K601H7-24	1.0	100/600	600/30/.040	300	70	2.000	3.000	1.250	0.56	24
SCC155K601H7-24	1.5	200-300/600	600/30/.040	300	70	2.000	3.000	1.250	0.56	24
SCC205K601H5-24	2.0	400/600	600/50/.045	500	100	2.000	3.000	1.250	0.56	24
SCC205K601H5-28	2.0	400/600	600/50/.045	500	100	2.000	3.000	1.250	0.40	28
SCC474K122H8-24	0.47	100/1200	1200/30/.065	300	60	2.000	3.000	1.250	0.56	24
SCC474K122H8-28	0.47	100/1200	1200/30/.065	300	60	2.000	3.000	1.250	0.40	28
SCC105K122H8-24	1.0	150/1200	1200/30/.065	300	60	2.475	3.000	1.500	0.56	24
SCC105K122H8-28	1.0	150/1200	1200/30/.065	300	60	2.475	3.000	1.500	0.40	28
SCC155K122H4-24	1.5	200/1200	1200/50/.085	500	100	2.500	3.500	1.575	0.81	24
SCC155K122H4-28	1.5	200/1200	1200/50/.085	500	100	2.500	3.500	1.575	0.65	28
SCC205K122H4-24	2.0	300/1200	1200/50/.085	500	100	2.800	3.625	1.700	0.87	24
SCC205K122H4-28	2.0	300/1200	1200/50/.085	500	100	2.800	3.625	1.700	0.71	28

1605 East Rodney French Blvd.
New Bedford, MA 02744
(508) 996-8564, Fax (508) 996-3830
<http://www.cornell-dubilier.com>
E-mail: cdendb@cornell-dubilier.com

CDE CORNELL
DUBILIER
Your Source For Capacitor Solutions