

## Attenuators



## DC-11 GHz

TYPE N HIGH POWER  
BI-DIRECTIONAL FIXED  
COAXIAL ATTENUATORS

- Broadband Frequency Coverage
- High Power, 20 and 50 Watts
- Small Size
- Stainless Steel Connectors

## SPECIFICATIONS

FREQUENCY RANGE (GHz)	MODEL	ATTENUATION dB			POWER INPUT		VSWR (Max)				WEIGHT (Max)		
		NOMINAL	DEVIATION		AVG. (W) Max	PEAK (kW) Max	DC-1	1-4	4-6	6-11	Oz	Gr	
DC-11	768	3	±.25	±.50	±.75	20	1	1.10	1.15	1.20	1.30	5.6	159
		6	±.25	±.50	±.75	20	1	1.10	1.15	1.20	1.30	5.6	159
		10	±.25	±.50	±.75	20	1	1.10	1.15	1.20	1.30	5.6	159
		20	±.25	±.50	±.75	20	1	1.10	1.15	1.20	1.30	5.6	159
		30	±.25	±.50	±.75	20	1	1.10	1.15	1.20	1.35	5.6	159

FREQUENCY RANGE (GHz)	MODEL	ATTENUATION dB		POWER INPUT		VSWR (Max)		WEIGHT (Max)		
		NOMINAL	DEVIATION	AVG. (W) Max	PEAK (kW) Max	DC-1	1-4	Oz	Gr	
DC-4	766	3	±0.25	±0.50	20	1	1.10	1.15	5.6	159
		6	±0.25	±0.50	20	1	1.10	1.15	5.6	159
		10	±0.25	±0.50	20	1	1.10	1.15	5.6	159
		20	±0.25	±0.50	20	1	1.10	1.15	5.6	159
		30	±0.75	±0.75	20	1	1.10	1.35	5.6	159

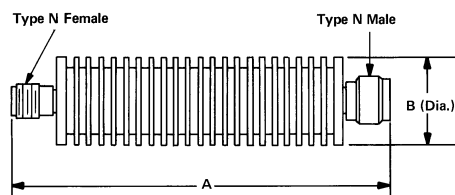
FREQUENCY RANGE (GHz)	MODEL	ATTENUATION dB		POWER INPUT		VSWR (Max)		WEIGHT (Max)		
		NOMINAL	DEVIATION	AVG. (W) Max	PEAK (kW) Max	DC-1	1-4	Oz	Gr	
DC-5	765	3	±0.30	±.50	50	2	1.20	1.30	15.5	440
		6	±0.30	±.50	50	2	1.20	1.30	15.5	440
		10	±0.30	±.50	50	2	1.20	1.30	15.5	440
		20	±0.30	±.50	50	2	1.20	1.30	15.5	440

**ORDERING INFORMATION:** Specify model number and dash number suffix for attenuation in dB.  
For example: 768-3

Note: For wireless band attenuators see pages 35-40

# Attenuators

## OUTLINE DRAWINGS



Models 765, 766, 768

Model No.	A	B
765	6.99	1.64
766	3.07	1.52
768	3.07	1.52

All dimensions are Max. unless otherwise specified.