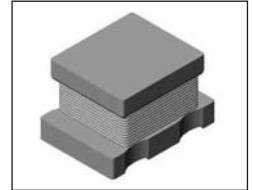


# SMT Power Inductor

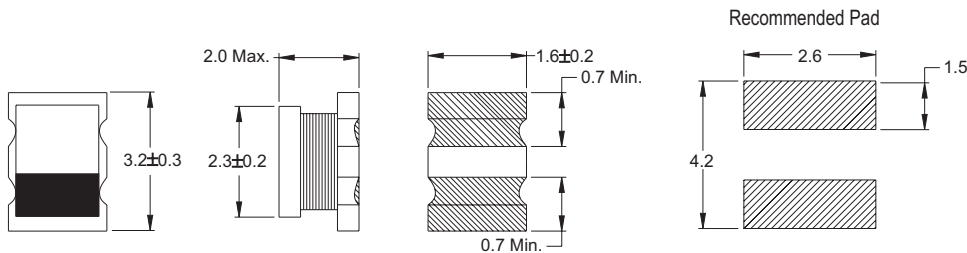
## SIH32 Type

### Features

- Small size (3.2mm\*1.8mm), low profile (2.0mm max. height) SMD type.
- Unshielded.
- Self-leads, suitable for high density mounting.
- High energy storage and low DCR.
- Provided with embossed carrier tape packing.
- Ideal for power source circuits, DC-DC converter, DC-AC inverters inductor application.
- In addition to the standard versions shown here, custom inductors are available to meet your exact requirements.

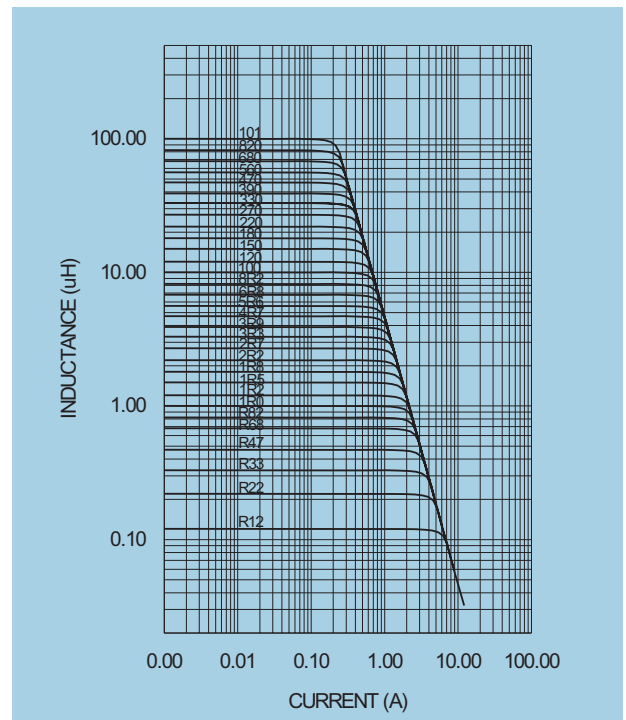


### Mechanical Dimension: Unit: mm



### Electrical Characteristics:

PART NO.	L ★ ( $\mu$ H)	DCR ( $\Omega$ ) MAX	I <sub>RATED</sub> ★★ (A <sub>dc</sub> )
SIH32-0R12	0.12	0.112	0.970
SIH32-0R22	0.22	0.140	0.850
SIH32-0R33	0.33	0.182	0.760
SIH32-0R47	0.47	0.210	0.700
SIH32-0R68	0.68	0.280	0.610
SIH32-0R82	0.82	0.336	0.560
SIH32-1R0	1.0	0.364	0.510
SIH32-1R2	1.2	0.429	0.480
SIH32-1R5	1.5	0.455	0.460
SIH32-1R8	1.8	0.507	0.440
SIH32-2R2	2.2	0.533	0.430
SIH32-2R7	2.7	0.585	0.410
SIH32-3R3	3.3	0.663	0.380
SIH32-3R9	3.9	0.702	0.370
SIH32-4R7	4.7	0.845	0.340
SIH32-5R6	5.6	1.014	0.310
SIH32-6R8	6.8	1.118	0.300
SIH32-8R2	8.2	1.573	0.250
SIH32-100	10	1.690	0.230
SIH32-120	12	2.080	0.220
SIH32-150	15	3.380	0.200
SIH32-180	18	3.640	0.170
SIH32-220	22	3.900	0.160
SIH32-270	27	4.420	0.150
SIH32-330	33	8.710	0.120
SIH32-390	39	9.790	0.110
SIH32-470	47	10.400	0.100
SIH32-560	56	11.700	0.091
SIH32-680	68	13.000	0.087
SIH32-820	82	14.300	0.083
SIH32-101	100	15.600	0.080



Tolerance of inductance  
0.12~100uH±10%

★★ I<sub>RATED</sub>: rated current.  $\Delta L < 10\%$ ,  $\Delta T < 45^\circ\text{C}$  at I<sub>RATED</sub>

★★★ Operating temperature: -20°C to 105°C (including self-temperature rise)

★★★★ Test condition at 25°C: 1.0~390uH 1MHz, 0.1v 470~560uH 1kHz, 1V



沙井欣旺电子有限公司

XINWANG ELECTRONICS, INC.  
TEL: 0755-29696626 FAX: 0755-27289711  
E-mail: zhangxf815@163.com