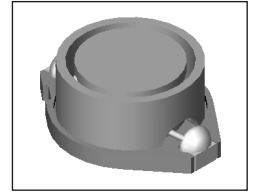


# SMT Power Inductor

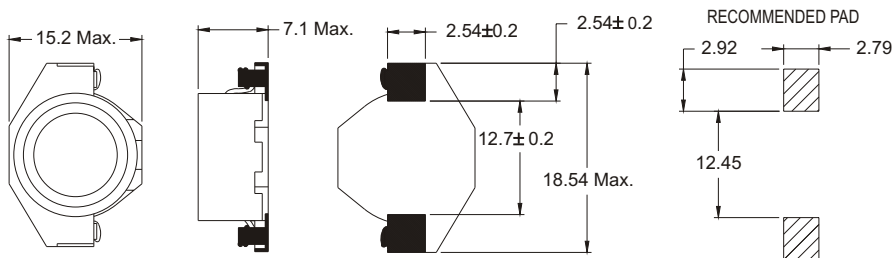
## SISC136 Type

### Features

- Low profile (7.1mm max. height) SMD type.
- Magnetically shielded, suitable for high density mounting.
- Self-leads, suitable for high density mounting.
- High energy storage and low DCR.
- Provided with embossed carrier tape packing.
- Ideal for power source circuits, DC-DC converter, DC-AC inverters inductor applications.
- In addition to the standard versions shown here, custom inductors are available to meet your exact requirements.

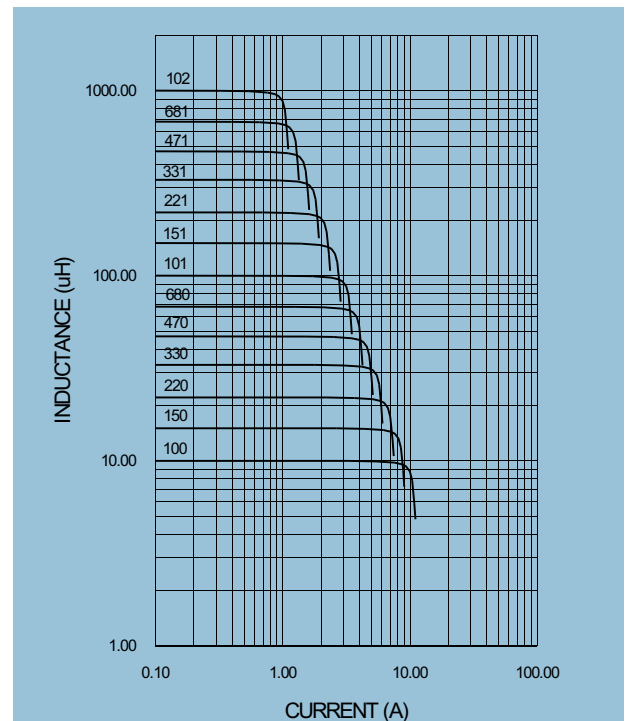


### Mechanical Dimension:



### Electrical Characteristics:

PART NO.	L* (uH)	DCR (mΩ) MAX	Is** (Adc)	Ir*** (Adc)
SISC136-100	10	40	8.00	3.90
SISC136-150	15	48	7.00	3.40
SISC136-220	22	59	6.00	3.10
SISC136-330	33	75	5.00	2.80
SISC136-470	47	97	4.00	2.40
SISC136-680	68	138	3.00	2.00
SISC136-101	100	207	2.40	1.70
SISC136-151	150	293	2.10	1.30
SISC136-221	220	470	1.90	1.10
SISC136-331	330	780	1.10	0.86
SISC136-471	470	1080	1.10	0.73
SISC136-681	680	1400	0.96	0.64
SISC136-102	1000	2010	0.80	0.53



★ Tolerance of inductance

10~1000uH±20%

★★ ΔL<10%, at Is.

★★★ ΔT<45°C, at Ir.

★★★★ Operating temperature: -20°C to 105°C (including self-temperature rise)

★★★★★ Test condition at 25°C: 100KHz, 0.1V



沙井欣旺电子有限公司

XINWANG ELECTRONICS, INC.

HTTP://WWW.XINWANGELE.COM

TEL: 0755-29696626 FAX: 0755-27289711

E-mail: sales@xinwangele.com