



TRANSMICOR T243 series low temperature

RELATIVE HUMIDITY TRANSMITTER WITH REMOTE CABLE PROBE



Main characteristics

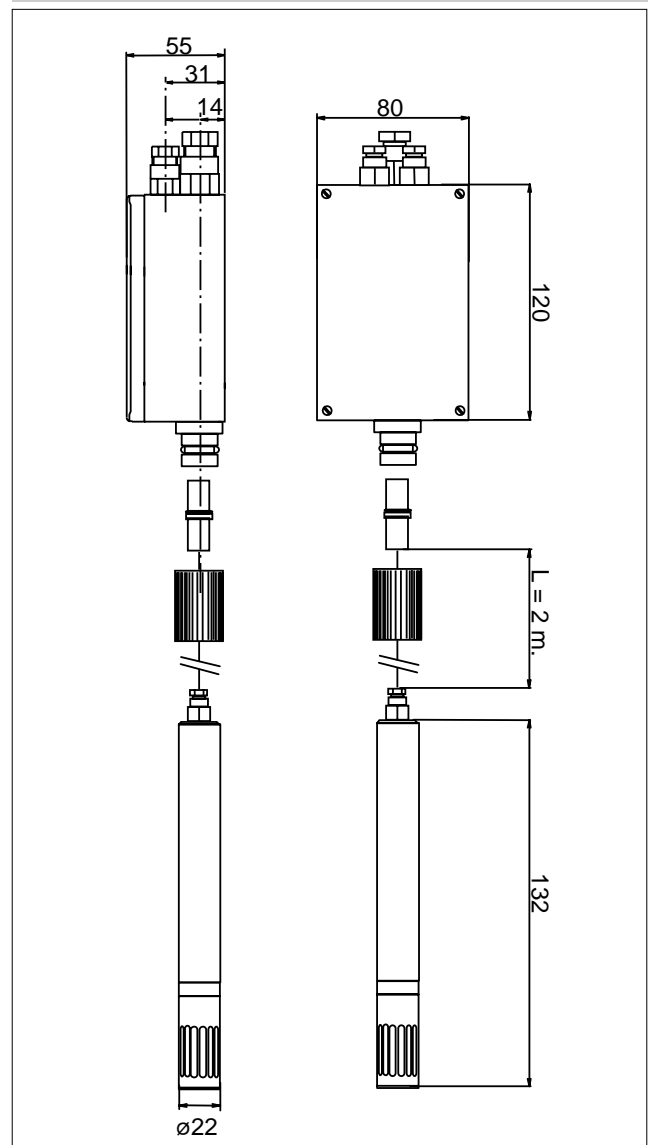
- Measuring range: 0 ... 100 %rh, -30 ... +85 °C
- Précision: ± 2 %rh, $\pm 0,2$ °C
- Output signal: 4 ... 20mA, 0 ... 20mA, 2 ... 10V
0 ... 10V (selectable with jumper),
Pt100 Ω 1/3 DIN
- Power supply: 24, 115, 230VAC
- Protection degree: IP65
- Interchangeable sensor module S6000
- Linearised and temperature compensated humidity measurement
- Capacitive thin film humidity sensor
- Sensor response time: < 10 seconds
- CE conformity

The T243 series relative humidity probe is equipped with the calibrated and fully interchangeable sensor module HUMICOR S6000, presenting an innovative element in humidity measurement. Maintenance cost is therefore drastically reduced and machine downtime is minimised.

TECHNICAL DATA

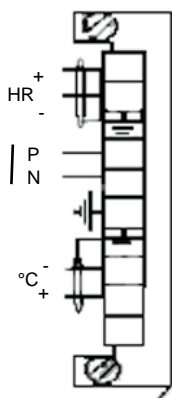
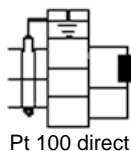
| | Humidity | Temperature |
|-------------------------------|--|--|
| Connections | 4 wire | 4 wire |
| Accuracy @ 23 °C | Hysteresis non-linearity included ± 2 %rh (5...95 %rh) $\pm 2,5$ %rh (< 5 %rh, > 95 %rh) | Pt100 Ω 1/3 DIN direct: $\pm 0,2$ °C Current output: $\pm 0,4$ °C Voltage output: $\pm 0,3$ °C |
| Measuring range | 0 ... 100 %rh | -30 ... +85 °C |
| Sensor response time | (90% of scale for a step change from 11% to 75 %rh) < 10 sec | / |
| Output signal | 0/4...20mA, 0/2...10V | Pt100 Ω direct 1/3 DIN (3 wire) 0/4...20mA, 0/2...10V |
| Temperature range | / | -30...+70 °C, 0...100 °C |
| Power supply: E | 24VAC, 115VAC, 230VAC + 10%, -15% | |
| Impedance: R | Current output: R < 500 Ω Voltage output: R > 1K Ω | |
| Consumption | 7VA global | |
| Operating range | | |
| Probe | 0 ... 100 %rh | -30 ... +85 °C |
| Housing | 0 ... 100 %rh | -30 ... +70 °C |
| Storage | 0 ... 100 %rh | -40 ... +70 °C |
| Housing | | |
| Dimension | 120*80*55 | |
| Material | ABS | |
| Weight | 540 g | |
| Probe | | |
| Dimension | \varnothing 22mm, L = 132mm Remote cable length 2 meters, \varnothing 3,5mm | |
| Material | DELTRIN | |
| Protection degree | IP65 | |
| Electrical connections | Screw terminal, tightening capacity 2,5 mm ² max. | |

DIMENSIONS

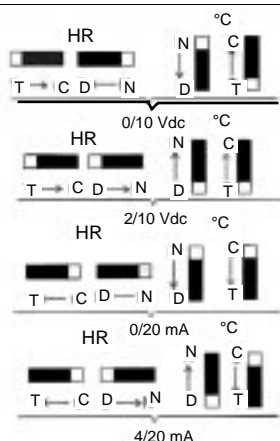


ELECTRICAL CONNECTIONS

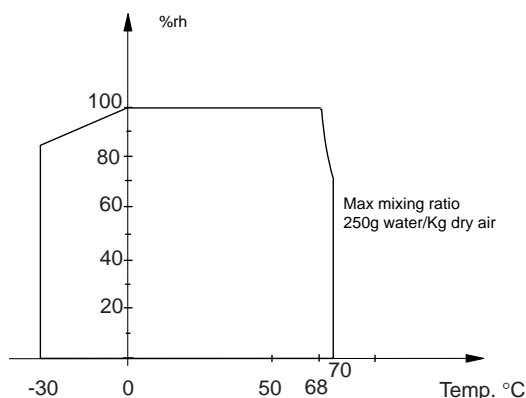
230 Vac 50/60 Hz +6% - 15%
115 Vac 50/60 Hz +6% - 15%
24 Vac 50/60Hz +6% - 15%



DIP-SWITCH output selection



MEASURING RANGE



ACCESSORIES

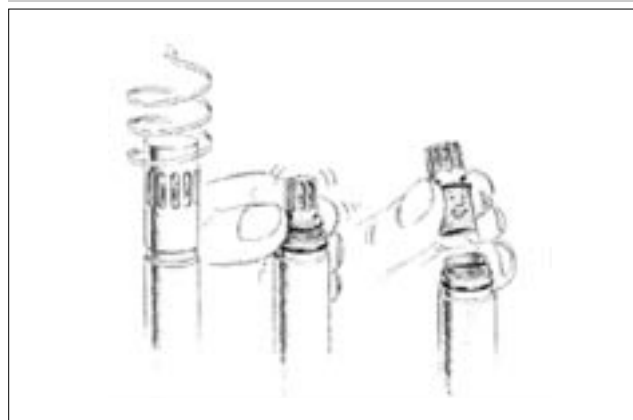
Control kit HKC:

You can check your hygrometer with the control kit HKC which is based on the principle of non-saturated salt solutions. Refer to technical data sheet 85521

Interchangeable sensor module S6000:

S6000 with Pt100 Ω output: Ref. 6A03130
S6000 without Pt100 Ω output: Ref. 6A08840

REMOVING THE S6000



ORDERING CODE

| T2 | | 4 | 3 | | | | |
|------------------------------------|--|---|---|--|--|--|--|
| Output signal | | 0...10V, 2...10V, 4...20mA, 0...20mA | | | | | |
| | | 4 | | | | | |
| Model | | Remote probe | | | | | |
| | | 3 | | | | | |
| Temperature range | | No temperature | | | | | |
| | | 0 | | | | | |
| | | Pt100 direct (Standard) | | | | | |
| | | 1 | | | | | |
| | | Range 0 ... 100 °C | | | | | |
| | | 2 | | | | | |
| | | Range -30 ... +70 °C | | | | | |
| | | 3 | | | | | |
| Power supply (Model 4 wire) | | 24 VAC | | | | | |
| | | 1 | | | | | |
| | | 115 VAC | | | | | |
| | | 2 | | | | | |
| | | 230 VAC | | | | | |
| | | 3 | | | | | |
| Probe | | DELTRIN, D22, 2m cable | | | | | |
| | | 3X | | | | | |
| Protection cap / filter | | Slotted cap DELTRIN, white (Standard) | | | | | |
| | | A | | | | | |
| | | Slotted cap DELTRIN, black | | | | | |
| | | B | | | | | |
| | | Slotted cap DELTRIN, white with polyethylene filter | | | | | |
| | | C | | | | | |
| | | Slotted cap DELTRIN, black with polyethylene filter | | | | | |
| | | D | | | | | |
| | | Slotted cap PVDF, white | | | | | |
| | | E | | | | | |
| | | Slotted cap PVDF, white, with teflon filter | | | | | |
| | | F | | | | | |
| | | Wire mesh filter, stainless steel | | | | | |
| | | G | | | | | |
| | | Sinter filter, stainless steel (*) | | | | | |
| | | H | | | | | |
| | | Sinter filter, stainless steel, teflon coated (*) | | | | | |
| | | I | | | | | |

(*) A knurled nut, ref. 1A04640, is necessary to fix these filter types

Example: T243.133XA

Relative humidity transmitter T243, DELTRIN probe, 2m remote cable version, signal output humidity 4...20mA, 0...20mA, 0...10V, 2...10V (0...100 %rh), temperature output Pt100 direct, power supply 24VAC, slotted cap in white DELTRIN.

GEFRAN spa reserves the right to make any kind of design or functional modification at any moment without prior notice



LEADER Electronic Co., Ltd

116, Jianghuali, Jianghua Road, Jiangmen City, GD, PRC
Tel: + 86 750 3101711, 3379183
ph. 0309888.1 - fax. 0309839063
Website: www.leadersensors.com
E-mail: leader@leadersensors.com



code 88571 -05/00