



# 360° PHASE SHIFTER

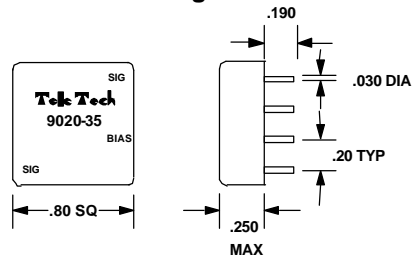
## MODEL 9020-35

### Guaranteed Specifications

Parameter	Limits
Frequency	37 ±2.5 MHz
Phase Range	360° Min
Insertion Loss	4 dB Max
Input Power	-10 dBm
Input VSWR	2.5:1 Max
Bias Control	.5 to 10 Volts

Note: All Specifications apply in a 50 Ohm system at specified levels at 25°C.

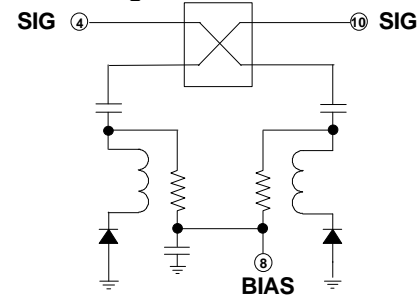
### Outline Drawing



### Maximum Ratings

Input Power	10 dBm Max
Control Voltage	12 Volts Max
Temperature Range	0°C to 85°C

### Block Diagram



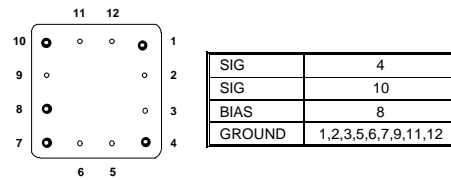
Case is Signal Ground

### Reliability

All units are designed and constructed to meet or exceed specifications after exposure to any or all of the following MIL-STD-202 tests which are applicable.

Test	Method	Condition
Temperature Cycle	107G	A
Thermal Cycle	107G	AA
Vibration	204D	A
Solderability	208F	
Terminal Strength	211A	A
Terminal Fatigue	211A	C
Mechanical Shock	213B	C

### Connections



Glass bead on Pin 1 a different color

All characteristics of Tele-Tech products may be modified to meet customer requirements.

P.O. Box 790, Bozeman, Montana 59717  
 Phone: (406) 586-0291 Fax: (406) 587-0653 E-mail: admin@tele-tech-rf.com