

Precision Fixed Attenuators

75Ω, DC to 2000 MHz

HAT-SERIES (75Ω)



FF747

Features

- excellent VSWR, 1.05:1 typ.
- excellent flatness, 0.1 dB typ. to 2000 MHz
- useable to 4000 MHz
- rugged unibody construction

Applications

- cable tv
- instrumentation
- DS3 signal

Electrical Specifications ($T_{AMB} = -55^{\circ}\text{C}$ to 100°C)

MODEL NO.	FREQUENCY RANGE (MHz) $f_L - f_U$	ATTENUATION (dB)							VSWR (-1)						POWER† (mW)	CASE STYLE	PRICE \$	
		FLATNESS‡							L		M		U					Qty. (1-9)
		Nom.	Typ.	Max.	Typ.	Max.	Typ.	Max.	Typ.	Max.	Typ.	Max.	Typ.	Max.				
HAT-3-75	DC-2000	3±0.2	0.05	0.15	0.10	0.20	0.15	0.30	1.05	1.2	1.15	1.25	1.22	1.35	500	FF747	11.95	
HAT-6-75	DC-2000	6±0.2	0.05	0.15	0.10	0.20	0.15	0.25	1.03	1.2	1.05	1.2	1.15	1.3	500	FF747	11.95	
HAT-10-75	DC-2000	10±0.2	0.05	0.15	0.05	0.20	0.05	0.20	1.03	1.2	1.04	1.2	1.1	1.3	500	FF747	11.95	
HAT-15-75	DC-2000	15±0.2	0.05	0.15	0.05	0.15	0.05	0.15	1.03	1.2	1.04	1.2	1.1	1.3	500	FF747	11.95	
HAT-20-75	DC-2000	20±0.2	0.05	0.15	0.05	0.15	0.05	0.20	1.03	1.2	1.04	1.2	1.1	1.3	500	FF747	11.95	

† 0.5 Watt at 70°C ambient, derate linearly .015 W/°C above 70°C.

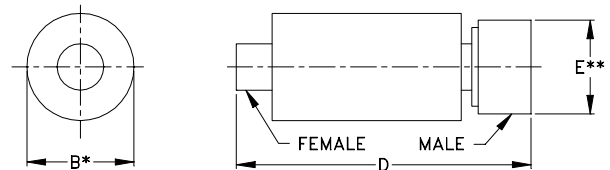
‡ Flatness is defined as peak to peak of difference of attenuation over the band divided by 2

L = DC - 500 MHz M = DC - 1000 MHz U = DC - f_U

Maximum Ratings

Operating Temperature	-55°C to 100°C
Storage Temperature	-55°C to 100°C
Connectors:	75 ohm BNC type male-BNC type female

Outline Drawing



B—OVERALL BODY DIMENSION
* MAX
** ACROSS FLATS

Outline Dimensions (inch mm)

A	B	C	D	E	wt.
—	.620	—	1.94	—	grams
—	15.75	—	49.28	—	30.0

REV. A
M8118
HAT-3-75 ED-1006/1
HAT-6-75 ED-9273/6
HAT-10-75 ED-9273/7
HAT-15-75 ED-9273/8
HAT-20-75 ED-9273/5
HAT-SERIES_75_OHMS
AB/LC/CP
020422



Distribution Centers NORTH AMERICA 800-654-7949 • 417-335-5935 • Fax 417-335-5945 • EUROPE 44-1252-832600 • Fax 44-1252-837010

INTERNET <http://www.minicircuits.com>

ISO 9001 CERTIFIED