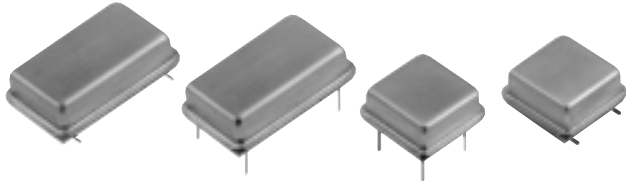




# VOLTAGE CONTROLLED CRYSTAL OSCILLATORS HCMOS 5V

**FULL SIZE D.I.L.**  
**M package**  
 M2001 thru M2007  
 M2021 thru M2023  
 M2031 thru M2033

**HALF SIZE D.I.L.**  
**H package**  
 H2001 thru H2007  
 H2021 thru H2023  
 H2031 thru H2033



## Thru-Hole / Gull Wing

0° to 70°C

1 MHz to 175 MHz

These 5V VCXOs generate an HCMOS frequency output which is controlled by an input voltage. The end-point frequency/voltage parameters are defined, as is the center frequency.

### GUARANTEED CAPTURE RANGE/ABSOLUTE PULL RANGE

Guaranteed Capture Range (GCR) and Absolute Pull Range (APR) are terms often used interchangeably. MF's Guaranteed Capture Range (GCR) is defined as the minimum guaranteed frequency deviation or "pull" (in ppm) around the nominal frequency, with all effects of temperature, variations in  $V_{DD}$ , variations in load, and aging taken into account. This amount of absolute frequency deviation is available under all operating conditions for modulation or capturing other signals. No additional frequency capture allowances are necessary.

### FEATURES

- Frequency from 1 MHz to 175 MHz
- Capture-range is fully defined, under all conditions
- Start-up time less than 5 ms
- Low profile package available above 60 MHz
- Choice of thru-hole or gull wing

### TYPICAL APPLICATIONS

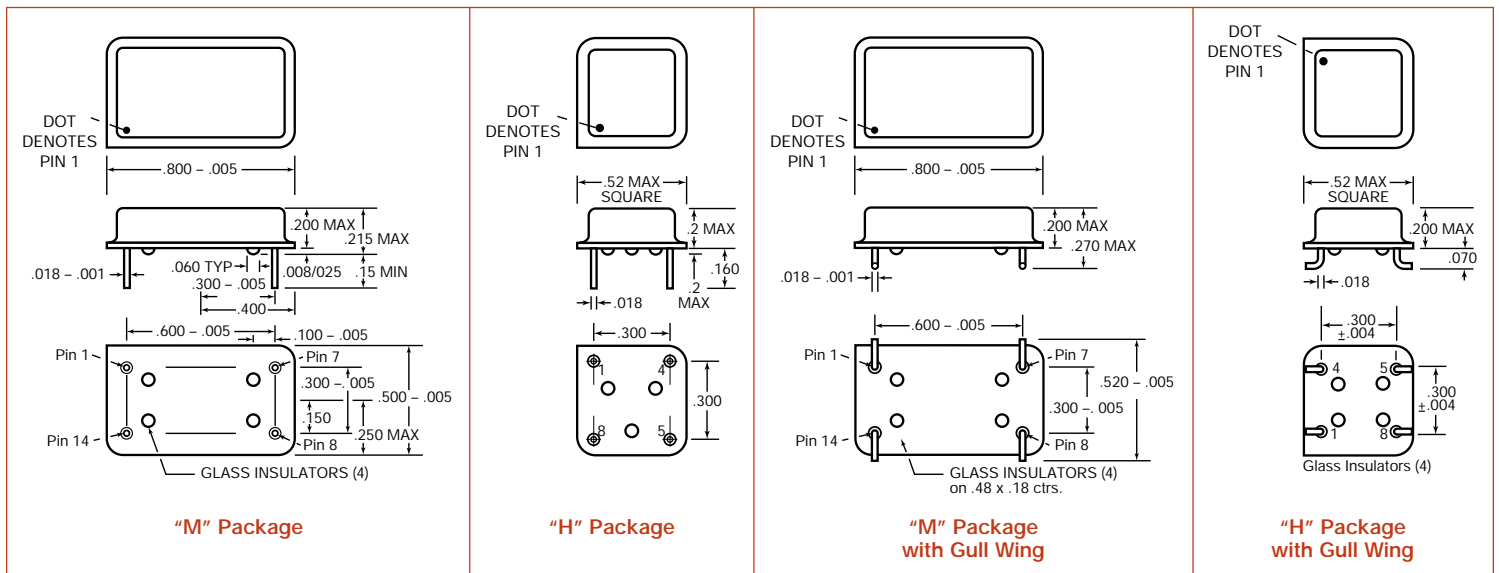
- Phase locked loops and data acquisition projects, including:
  - xDSL customer premise equipment
  - Cable modems
  - ATM/SONET/SDH

### Description

Thru-hole VCXOs are available for 5V operation from 1 MHz to 175 MHz. Users have a choice of many off-the-shelf models. Diverse combinations of pull, control voltage and center frequency deviation are available, accommodating a wide variety of filtering and driving circuitry. Standard VCXOs are hermetically sealed in full size (M) or half size (H), DIL packages. All VCXOs are tested and guaranteed over 0 to 70°C. For operation from -40 to +85°C see our extended temperature models.

### CONNECTIONS

Full Size	Half Size	
Pin 1.	Pin 1.	Control Voltage, $V_C$
Pin 7.	Pin 4.	Ground & Case
Pin 8.	Pin 5.	Output
Pin 14.	Pin 8.	+5V, $V_{DD}$





**VOLTAGE CONTROLLED  
CRYSTAL OSCILLATORS  
HCMOS 5V  
Thru-Hole /Gull Wing,  
0° to 70°C  
1 MHz to 175 MHz**

**FULL SIZE D.I.L.  
M package**  
M2001 thru M2007  
M2021 thru M2023  
M2031 thru M2033

**HALF SIZE D.I.L.  
H package**  
H2001 thru H2007  
H2021 thru H2023  
H2031 thru H2033

**Center Frequency is Between Two Voltages**

MODEL	Control Voltage (Volts)	Frequency Deviation (ppm)	Guaranteed Capture Range (ppm)	Control Voltage at Center Frequency	Center Frequency Stability (ppm)
2001	0.3 to 10.0	± 175 min	± 175	2.5 to 5.0	± 30, typ ± 50, max
2002	0.3 to 4.0	± 75 min	± 75	1.3 to 2.3	
2003	0.3 to 10.0	± 175 to 300	± 175	2.5 to 5.0	
2004	0.3 to 4.0	± 125 min	± 125	1.3 to 2.3	
2005	1.0 to 4.0	± 75 to 300	± 75	1.8 to 3.0	
2006	0 to 5.0	± 150 min	± 150	—	
2007	0.5 to 4.5	± 125 to 250	± 125	1.8 to 3	

**Center Frequency is at 2.5V with ±50 ppm stability**

MODEL	Control Voltage (Volts)	Frequency Deviation (ppm)	Guaranteed Capture Range (ppm)	Control Voltage at Center Frequency	Center Frequency Stability (ppm)
2021	0.5 to 4.5	± 75 to 150	± 75	2.5	± 30, typ ± 50, max
2022	0.5 to 4.5	± 100 to 200	± 100	2.5	
2023	0.5 to 4.5	± 150 to 300	± 150	2.5	

**Center Frequency is at 2.5V with ±25 ppm stability**

MODEL	Control Voltage (Volts)	Frequency Deviation (ppm)	Guaranteed Capture Range (ppm)	Control Voltage at Center Frequency	Center Frequency Stability (ppm)
2031	0.5 to 4.5	± 75 to 150	± 75	2.5	± 20, typ ± 25, max
2032	0.5 to 4.5	± 100 to 200	± 100	2.5	
2033	0.5 to 4.5	± 150 to 300	± 150	2.5	

**DESCRIPTIONS**

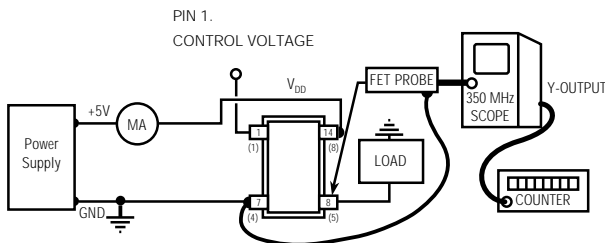
M2001, H2001	±175 ppm, min. deviation when using 0.3 to 10V control-voltage
M2002, H2002	±75 ppm, min. deviation when using 0.3 to 4.0V control-voltage
M2003, H2003	±175 ppm to ±300 ppm deviation when using 0.3 to 10V control-voltage
M2004, H2004	±125 ppm min. deviation when using 0.3 to 4.0V control-voltage
M2005, H2005	±75 ppm to ±300 ppm deviation when using 1.0 to 4.0V control-voltage, for use where the control voltage is 1 volt off both rails
M2006, H2006	±150 ppm, min. deviation when using 0 to 5.0V rail-to-rail control-voltage
M2007, H2007	±125 ppm to ±250 ppm deviation when using 0.5 to 4.5V control-voltage
M2021, H2021	±75 ppm capture when using using 0.5 to 4.5V control-voltage and 2.5V center with ±50 ppm stability
M2022, H2022	±100 ppm capture when using using 0.5 to 4.5V control-voltage and 2.5V center with ±50 ppm stability
M2023, H2023	±150 ppm capture when using using 0.5 to 4.5V control-voltage and 2.5V center with ±50 ppm stability
M2031, H2031	±75 ppm capture when using using 0.5 to 4.5V control-voltage and 2.5V center with ±25 ppm stability
M2032, H2032	±100 ppm capture when using using 0.5 to 4.5V control-voltage and 2.5V center with ±25 ppm stability
M2033, H2033	±150 ppm capture when using using 0.5 to 4.5V control-voltage and 2.5V center with ±25 ppm stability

**FREQUENCY STABILITY**

Frequency stability vs. Temperature (0 to 70°C) is typically better than ±20 ppm. Since the deviation of each oscillator is tested and guaranteed over the whole operating temperature range, it is not necessary to make additional capture allowance. All oscillators will capture frequencies with the full minimum values of the deviation under all conditions.

**QUALITY**

Each VCXO is computer-tested at three temperatures to guarantee full compliance to the specification.



Half Size connections shown in ( )

To adapt Fet probe to receptacle use Tektronix Part #103-0164-00

To connect output to scope use Tektronix Part #131-0258-00 (receptacle)

**ALL OSCILLATORS HAVE INTERNAL BYPASS CAPACITORS**

**TEST CIRCUIT**





**VOLTAGE CONTROLLED  
CRYSTAL OSCILLATORS  
HCMOS 5V  
Thru-Hole /Gull Wing,  
0° to 70°C  
1 MHz to 175 MHz**

**FULL SIZE D.I.L.  
M package**  
M2001 thru M2007  
M2021 thru M2023  
M2031 thru M2033

**HALF SIZE D.I.L.  
H package**  
H2001 thru H2007  
H2021 thru H2023  
H2031 thru H2033

**ELECTRICAL SPECIFICATIONS**

**Frequency Range** 1 MHz to 175 MHz

**Frequency Stability** Includes calibration at 25°C, operating temperature, change of input voltage, change of load, shock and vibration.

**Center Frequency Range**  
 $V_C = 2.5V$  1 MHz to 175 MHz

**Frequency Stability**  
 $V_C = 2.5V$   $\pm 20, \pm 25$  or  $\pm 50$  ppm, max.  
as shown in model specification

	MIN	TYP	MAX	UNITS
<b>Input Voltage</b>	4.5	5.0	5.5	volts
<b>Input Current</b>		30	45	mA
<b>Output Levels (HCMOS)</b>				
"0" Level, sinking 16 mA.			0.4	volts
"1" Level, sourcing 10 mA.	$V_{DD} - .4$			volts
<b>Rise and Fall Times, HCMOS</b>				
From 0.4 to ( $V_{DD} - .4$ ) V		2.5	4	ns
(Above 35 MHz)			2	ns
<b>Symmetry</b>				
At $V_{DD}/2$			45/55	percent
<b>Aging</b>				
First year		3		ppm
After first year		1		ppm/yr
<b>Input Impedance,</b>				
Pin 5., Control Voltage	15	1000		Kohms
<b>Control Voltage Bandwidth</b>	15	150		KHz

**ENVIRONMENTAL SPECIFICATIONS**

**Temperature**  
Operating 0° to 70°C  
Storage -55° to +125°C

**Temperature Cycle** – Not to exceed  $\pm 5$  ppm change when exposed to 2 hours maximum at each temperature from 0 to 120°C, with 25°C reference

**Shock** – 1000 Gs, 0.35 ms, 1/2 sine wave, 3 shocks in each plane

**Vibration** – 10-2000 Hz of .06" d.a. or 20 Gs, whichever is less

**Humidity** – Resistant to 85° R.H. at 85°C

**MECHANICAL SPECIFICATIONS**

**Gross Leak** – Each unit checked in 125°C fluorocarbon

**Fine Leak** – Mass spectrometer leak rate less than  $2 \times 10^{-8}$  atmos, cc/sec of helium

**Pins** – Kovar, nickel plated with 60/40 solder coat

**Bend Test** – Will withstand two bends of 90° from reference

**Header** – Steel, with nickel plate

**Case** – Stainless steel, type 304

**Marking** – Permanent black epoxy ink or laser marked

**Resistance to Solvents** – MIL STD 202, Method 215

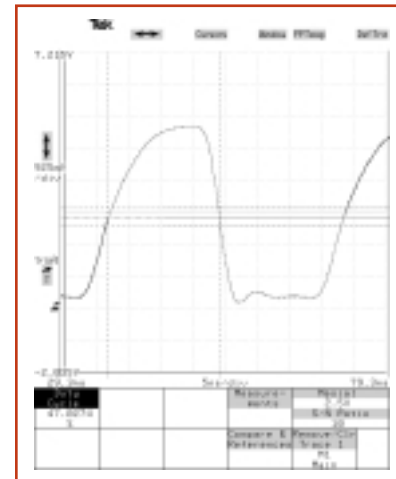


Fig. 1 M2001-27M  
with 33 pf load





VOLTAGE CONTROLLED  
CRYSTAL OSCILLATORS  
HCMOS 5V  
Thru-Hole /Gull Wing,  
0° to 70°C  
1 MHz to 175 MHz

FULL SIZE D.I.L.  
M package  
M2001 thru M2007  
M2021 thru M2023  
M2031 thru M2033

HALF SIZE D.I.L.  
H package  
H2001 thru H2007  
H2021 thru H2023  
H2031 thru H2033

FREQUENCY VS. CONTROL VOLTAGE  
FOR TYPICAL DEVICES

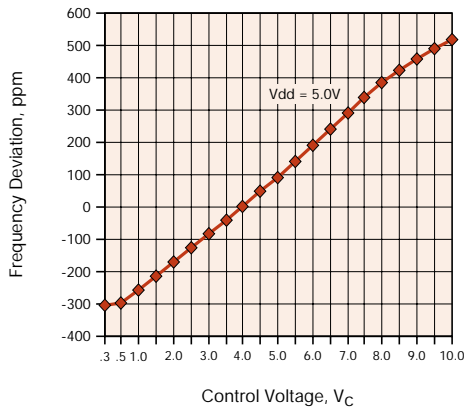


Fig. 2 M2001-40M

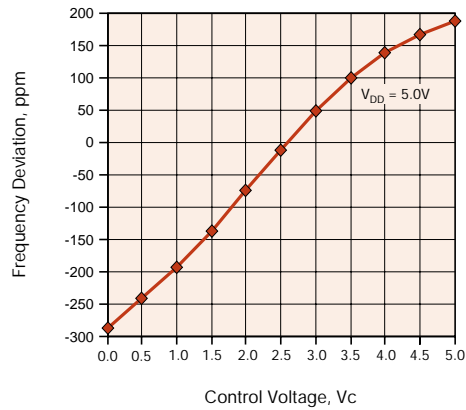


Fig. 6 M2023-19.44

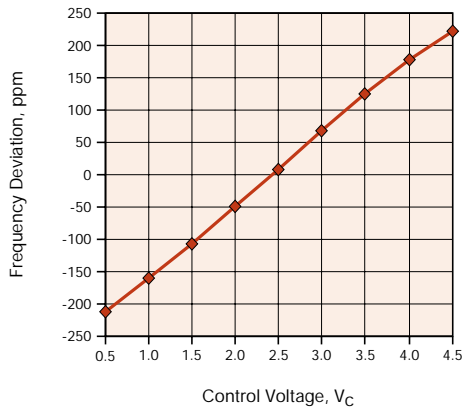


Fig. 4 M2007-16.777216M

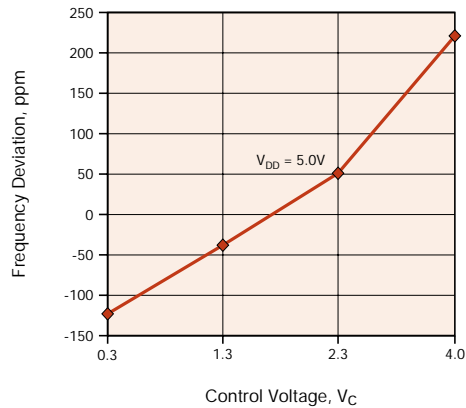


Fig. 3 M2002-12.352

HOW TO ORDER

For Part Number, put package type before model number, and add frequency in MHz, for example:

M 2033-14.372M

- ↑ "M" is full size DIL  
"H" is half size DIL
- ↑ "2033" is model type
- ↑ "14.372 M" frequency in MHz
- ↑ Leave blank for straight leads  
Add "G" for gullwing

Unless customer-specific terms and conditions are signed by an officer of MF Electronics, the sale of this and all MF Electronics products are subject to terms and conditions set forth at [www.mfelectronics.com/terms](http://www.mfelectronics.com/terms)

SS#	Rev.
M2001	A

