

## 誘電体フィルタ Dielectric Filter for Communication

移動体通信機器用に開発した小型・低挿入損失の表面実装対応型誘電体デバイス。

This series are SMD dielectric devices and designed for mobile communication, featuring small size and low insertion loss.

### 特長 Features

- |            |                      |
|------------|----------------------|
| 1. 小型。     | 1. Small size.       |
| 2. 表面実装対応。 | 2. SMD package.      |
| 3. 高信頼性。   | 3. High reliability. |



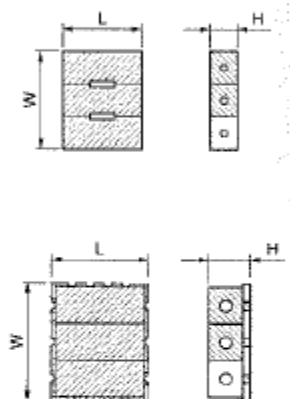
### 仕様 Specifications

System	Model No.	Center frequency : fo (MHz)	Pass Band : PB (MHz)	I. Loss at PB dB max.	Attenuation		Package (mm) L X W X H
					Measurement Points (MHz)	dB min.	
PCN (DCS1800)	TDF17323	1747.5	±37.5	3.5	fo - 147.5 fo + 57.5	25 5	5.3 X 6.2 X 2.3
	TDF1832D	1842.5	±37.5	3.2	fo - 57.5 fo + 77.5	5 5	
	TDF1842S24*	1842.5	±37.5	3.2	fo - 57.5 fo + 100	5 18	4.5 X 5.5 X 2.0
PCB	TDF1832B	1880.0	±30.0	3.1	fo - 100 fo + 50	18 5	5.3 X 6.2 X 2.3
	TDF19323	1980.0	±30.0	3.2	fo - 100 fo + 50	18 5	4.8 X 6.0 X 2.3
	TDF1960S21*	1960.0	±30.0	3.2	fo ± 110	20	4.2 X 5.5 X 2.0
DECT	TDF18222	1890.0	±10.0	2.0	fo - 220	35	4.0 X 4.9 X 2.3
Wireless LAN	TDF24221	2484.0	±13.0	2.0	fo - 200 fo + 200	20 15	4.3 X 4.9 X 2.3
	TDF24223*	2450.0	±50.0	2.0	fo ± 300	20	4.3 X 4.9 X 2.3
	TDF24321	2450.0	±50.0	3.0	fo ± 300	27	4.8 X 5.0 X 2.3
	TDF24322	2484.0	± 2.0	4.0	fo ± 90	20	5.0 X 6.2 X 2.3
	TDF2450S21*	2450.0	±50.0	3.0	fo ± 300	27	3.5 X 5.5 X 2.0
GPS	TDF15222	1575.0	± 1.0	3.2	fo ± 50	15	4.3 X 6.2 X 2.3
	TDF15223	1575.0	±10.0	1.5	fo ± 140	15	
	TDF1575S21*	1575.0	± 1.0	3.2	fo ± 50	15	3.7 X 5.1 X 2.0
DAB	TDF14229	1472.0	±20.0	1.6	fo ± 150	15	4.3 X 6.2 X 2.3
	TDF1472F01*	1472.0	±20.0	1.0	fo - 512 fo + 328	50 45	7.0 X 6.0 X 3.4
IMT-2000	TDF1950S21*	1950.0	±30.0	3.3	fo + 90	25	4.2 X 5.5 X 2.0
	TDF2140S21*	2140.0	±30.0	3.3	fo - 90	25	
DTV CATV	TDF1301F02*	1301.5	± 3.0	5.0	fo ± 3.0 1213.5 ± 3.0 (ref to fo level)	6.0 60.0	10.0 X 12.0 X 4.6

\* 開発中 \* Under development

\* 仕様はことわりなく変更することがあります。 \* Specifications are subject to change without notice.

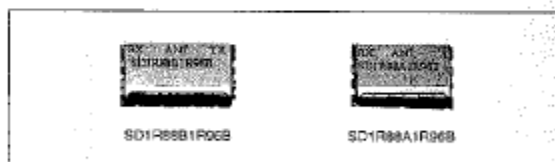
### 形状 Package



## アンテナ デュプレクサ ANT Duplexer for Communication

### 特長 Features

- |            |                      |
|------------|----------------------|
| 1. 小型。     | 1. Small size.       |
| 2. 表面実装対応。 | 2. SMD package.      |
| 3. 高信頼性。   | 3. High reliability. |



### 仕様 Specifications

System	Model No.	Center frequency : fo (MHz)	Pass Band : PB (MHz)	I. Loss at PB dB max.	Attenuation		Package (mm) L X W X H
					Measurement Points (MHz)	dB min.	
TDMA1800	SD1R88A1R96B	Rx	1960.0	±30.0	3.2	PB of Tx	22
		Tx	1890.0	±30.0	1.9	PB of Rx	16
	SD1R88B1R96B	Rx	1960.0	±30.0	3.6	PB of Tx	23
		Tx	1890.0	±30.0	2.5	PB of Rx	20
	SD1R88C1R96B	Rx	1960.0	±30.0	4.1	PB of Tx	19
		Tx	1890.0	±30.0	2.6	PB of Rx	17
CDMA1800	Under development						
DCS1800	SD1R74A1R96B	Rx	1842.5	±37.5	3.4	PB of Tx	20
		Tx	1747.5	±37.5	2.0	PB of Rx	16
ICO	SD2R00X2R18X	Rx	2185.0	±15.0	0.9	PB of Tx	22
		Tx	1747.5	±15.0	0.8	PB of Rx	20
cdma One	SDR851GR906A	RxL	839	± 7.0	3.7	(Isolation) PB of TxL	55
		TxL	894	± 7.0	1.7	PB of RxL	35
		RxH	895	± 5.0	3.5	PB of TxH	55
		TxH	920	± 5.0	1.6	PB of RxH	35

\* 仕様はことわりなく変更することがあります。 \* Specifications are subject to change without notice.

### 形状 Package

