

Power Amplifiers

POWER AMPLIFIERS

FOR RADAR AND POINT-TO-POINT COMMUNICATIONS

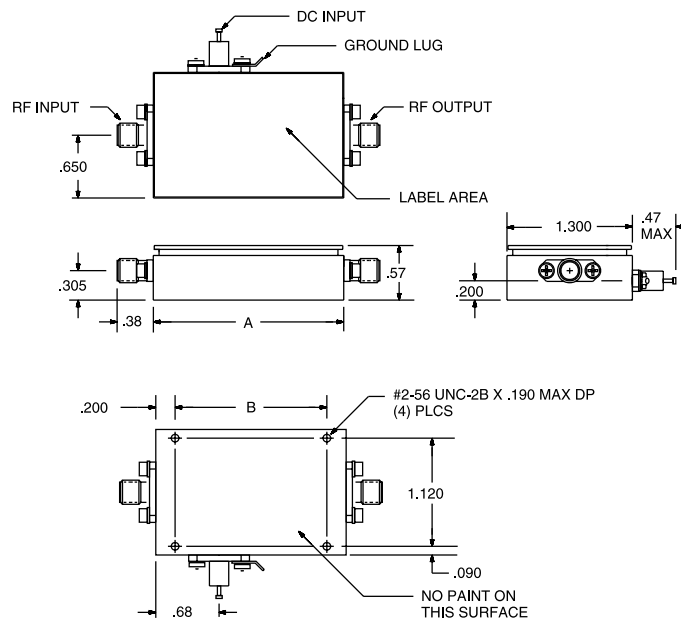


SPECIFICATIONS

MODEL NUMBER	FREQUENCY RANGE (GHz)	GAIN MIN (dB)	GAIN MAX (dB)	NOISE FIGURE TYP/MAX (dB)	Psat MIN (dBm)	GAIN FLATNESS MAX (\pm dB)	IP3 TYP (dBm)	VSWR 50 OHMS I/O TYP	CURRENT @ 12 Vdc MAX (mA)	CASE OPTIONS
DBP-3135N827	31.0-35.0**	28	36	7.0/8.0	27	1.5	N/A	2.2/2.2	2200	DBK-6P
DBP-3540N727	35.5-40.5**	26	34	8.0/9.0	27	1.5	N/A	2.2/2.2	2200	DBK-6P
DBP-4042N825	40.5-42.5**	20	26	8.0/9.0	25	1.5	N/A	2.5/2.5	2200	DBK-6P
DBP-4345N823	43.5-45.5**	20	28	7.5/8.5	23	1.5	N/A	2.5/2.5	2200	DBK-6P

All above-mentioned amplifiers include internal voltage internal regulator with input voltage of +11.8 Vdc to +15.5 Vdc. Maximum RF input power is 20 dBm (CW) or 30 dBm pulse, 1 microsecond and 1% duty cycle. These amplifiers are also offered with a variety of gain boxes under special request. They are also offered with WG or COAX I/O connectors that must be specified by the customer at the time of order. ** Over any 500 MHz bandwidth.

OUTLINE DRAWING



CASE	A DIM	B DIM
DBK-6P	1.973	1.573
DBK-8P	2.371	1.971

- NOTES:
 1. ALL DIMENSIONS ARE IN INCHES.
 2. TOLERANCE: .XX= \pm .02
 .XXX= \pm .010
 3. ALL TOLERANCES APPLY BEFORE PAINT & LABELING.
 4. RF INPUT/OUTPUT CONNECTORS ARE FEMALE SMA & K COMPATIBLE.