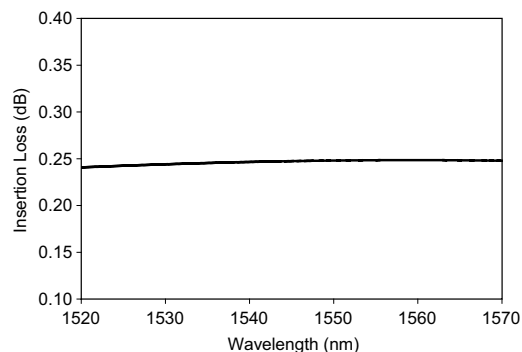


# Product Bulletin



The tap coupler is a compact, low-loss, fused component (1x2) that provides a means for signal monitoring in erbium doped fiber amplifiers (EDFAs) and optical networks. It utilizes advanced fused-fiber technology to yield ultra-low insertion loss, low polarization dependent loss (PDL), and a flat wavelength response across the erbium gain spectrum. The fused tap coupler can be provided in both C- and L-band versions with a wide range of tap ratios (0.5 to 50%).

## Fused 5% Tap Coupler Spectral Response Signal Port 1520 to 1570 nm



- <0.05 dB WDL
- Flatter gain, especially when cascading large numbers of amplifiers
- <0.1 dB excess loss
- Higher gain
- Lower noise figure

## Fused Tap Couplers

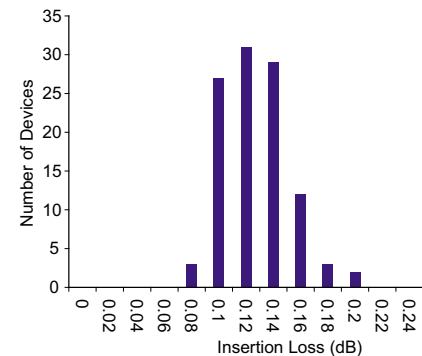
### Key Features

- Ultra-low signal loss
- Low and consistent wavelength dependence
- Low PDL

### Applications

- Fiber amplifier signal monitoring
- Network monitoring

## Fused 2% Tap Couplers 98% Insertion Loss at 1550 nm



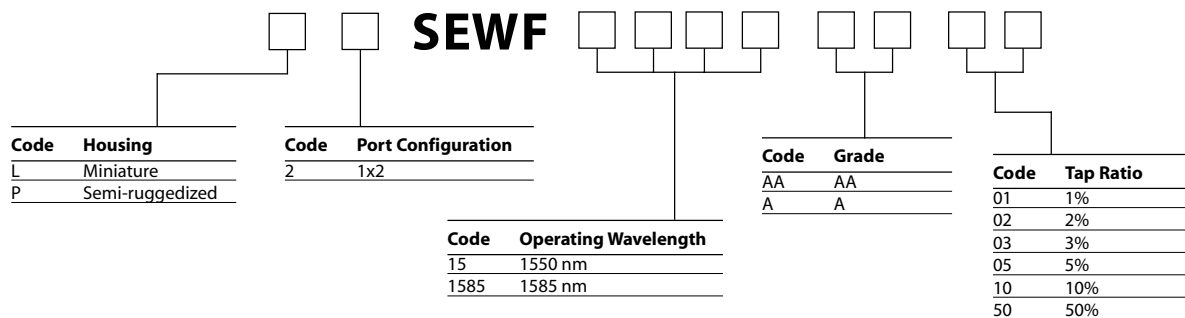
**Specifications**

Parameter	Fused Tap Couplers											
Operating wavelength range	1530 to 1560 or 1570 to 1600 nm											
Tap ratio	1%		2%		3%		5%		10%		50%	
Grade	AA	A	AA	A	AA	A	AA	A	AA	A	AA	A
Typical excess loss	0.1 dB	0.2 dB	0.1 dB	0.2 dB	0.1 dB	0.2 dB	0.1 dB	0.2 dB	0.1 dB	0.2 dB	0.1 dB	0.2 dB
Maximum signal insertion loss	0.2 dB	0.3 dB	0.25 dB	0.35 dB	0.3 dB	0.4 dB	0.4 dB	0.5 dB	0.7 dB	0.8 dB	3.3 dB	3.6 dB
Maximum tap insertion loss	21.5 dB	23.0 dB	18.2 dB	19.0 dB	16.0 dB	17.0 dB	14.0 dB	14.5 dB	11.0 dB	11.5 dB	3.3 dB	3.6 dB
Wavelength dependence of tap insertion loss	0.2 dB	0.4 dB	0.2 dB	0.3 dB	0.15 dB	0.3 dB	0.15 dB	0.2 dB	0.1 dB	0.2 dB	0.1 dB	0.2 dB
Return loss/directivity	50 dB											
Polarization dependent loss (tap port)	0.2 dB	0.3 dB	0.15 dB	0.25 dB	0.15 dB	0.25 dB	0.15 dB	0.25 dB	0.1 dB	0.2 dB	0.1 dB	0.1 dB
Fiber	Corning SMF-28											
Dimensions	L-type Ø 3.0 x 50 mm P-type Ø 5.0 x 75 mm											
Pigtail length	>1000 mm											

**Ordering Information**

Indicate your requirements by selecting one option from each configuration table. Please print the corresponding codes in the available boxes to form your part number. For more information on this or other products and their availability, please contact your JDS Uniphase account manager, or call 1-877-550-JDSU toll free in North America or visit [www.jdsuniphase.com](http://www.jdsuniphase.com).

**Sample: L2SEWF15A01**



SMF-28 is a registered trademark of Corning Incorporated.

