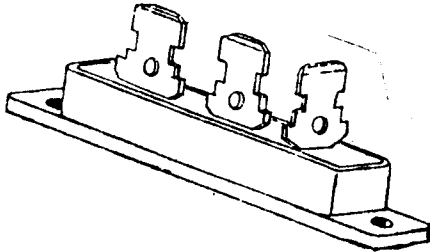


**SDA 480**  
**25 AMP RECTIFIER ASSEMBLY**  
**CENTER TAP ULTRA FAST RECOVERY**  
**50 - 300 VOLTS**



14830 Valley View Avenue  
 La Mirada, California 90638  
 P. O. Box 577  
 La Mirada, California 90637  
 (213) 921-9660  
 TWX 910-583-4807

**CASE STYLE**



**FEATURES**

- ULTRA FAST RECOVERY 40 NSEC MAX
- PIV TO 300 VOLTS PER LEG
- HIGH SURGE 150 AMPS
- ALUMINUM CASE, ELECTRICALLY ISOLATED
- HERMETICALLY SEALED DISCRETES
- THERMALLY SUPERIOR ENCAPSULANT
- SPADE, HOOK, OR TORRET TERMINALS

**MAXIMUM RATINGS**

Rating	Symbol	Value	Unit
Peak Repetitive Reverse Voltage <i>Per Leg</i> and DC Blocking Voltage <i>Per Leg</i>	$V_{RM} (rep)$ $V_R$	50 100 150 200 250 300	Volts
RMS Reverse Voltage <i>Per Leg</i>	$V_r$	35 70 105 140 175 210	Volts
Half Wave Rectified Forward Current, Averaged Over Full Cycle (Resistive Load, 60Hz, Sine Wave, $T_C = 55^\circ C$ )	$I_D$	25	Amps
Peak Repetitive Forward Current ( $T_C = 55^\circ C$ , 8.3 ms Pulse, Allow Junction to Reach Equilibrium Between Pulses)	$I_{FM} (rep)$	75	Amps
Peak Surge Current ( $T_C = 55^\circ C$ , Superimposed on Rated Current at Rated Voltage, 8.3 ms Pulse)	$I_{FM} (surge)$	150	Amps
Operating and Storage Temperature	$T_J, T_{stg}$	-65 to +150	$^\circ C$

**THERMAL CHARACTERISTICS**

Characteristics	Symbol	Max	Unit
Thermal Resistance, Junction to Case	$R_{\theta JC}$	6.0	$^\circ C/W$

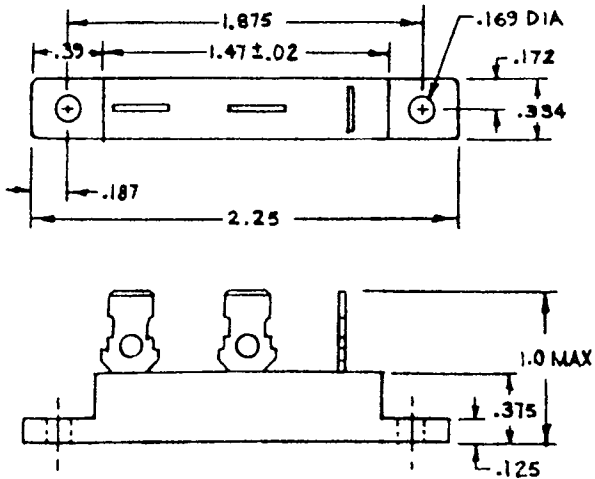
# ELECTRICAL CHARACTERISTICS

Characteristics	Symbol	Value	Unit
Max Full Cycle Forward Voltage Drop, Averaged Over Full Cycle, Per Leg ( $I_D$ (Max), 60 Hz, Square Wave, $T_C = 55^\circ\text{C}$ )	$V_{F(AV)}$	.5	Vdc
Max Instantaneous Forward Voltage Drop Per Leg ( $I_F = 6$ Amps, $T_C = 25^\circ\text{C}$ , 300 us Pulse)	$V_F$	.75	Vdc
Max Full Cycle Reverse Leakage Current, Averaged Over Full Cycle, Per Leg (Rated $V_R$ , 60Hz, Square Wave, $T_C = 100^\circ\text{C}$ )	$I_{R(AV)}$	1	n.Adc
Max Reverse Leakage Current Per Leg (Rated $V_R$ , $T_C = 25^\circ\text{C}$ )	$I_R$	20	uAdc
Max Junction Capacitance Per Leg ( $V_R = 10$ V, $T_C = 25^\circ\text{C}$ )	$C_J$	100	pf

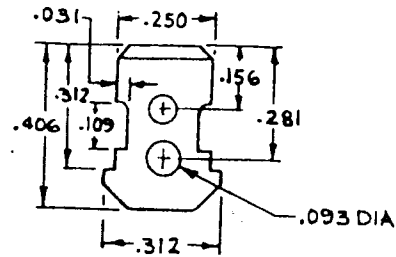
# REVERSE RECOVERY CHARACTERISTICS

Characteristics	Symbol	Min	Typ	Max	Unit
Reverse Recovery Time ( $I_F = 500\text{ma}$ , $I_R = 1\text{A}$ , $I_{RR} = 250\text{ma}$ )	$t_{rr}$	-	-	40	ns

# PHYSICAL DIMENSIONS



TERMINAL DETAIL



\* TERMINAL CONFIGURATION  
Case (P) Case (N) Case (D)

