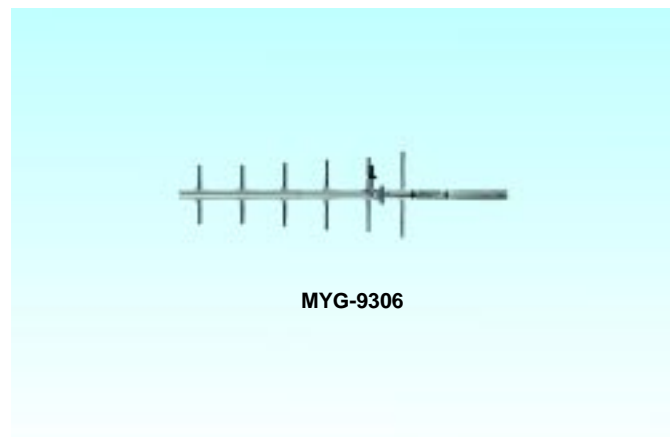


MYG 900 MHz Series *Welded Construction Yagi*

The MYG 900 Series is constructed of gold anodized 6061-T6 seamless aluminum, and features complete 360 degree welds surrounding the 3/8" solid elements and connector mounting block assemblies. Additionally, the connector is gold plated to provide the finest electrical connection possible. These antennas are supplied with a solid aluminum mounting clamp and stainless steel mounting hardware.

Features:

- ◆ 360 degree welds for all elements and connector mounting block
- ◆ Solid aluminum mounting clamp with stainless steel hardware
- ◆ Gold anodized finish for long lasting protection
- ◆ Gold plated connector
- ◆ MYG-ED series features enclosure of the driven element
- ◆ MYG-FE series features encapsulation of the entire antenna



Electrical Specifications

MYA 900 MHz Series, Aluminum Yagi

Model #	Frequency Range	Factory Tuned Frequency	Gain	Bandwidth @ 1.5:1 VSWR	Horizontal Beamwidth @ 1/2 Power	Vertical Beamwidth @ 1/2 Power	Front to Back Ratio
MYA-9153	896-970 MHz	915 MHz	6dB	50 MHz	72°	57°	15dB
(B)MYA-9303	896-970 MHz	930 MHz	6dB	50 MHz	72°	57°	15dB
MYA-9156RPC	896-940 MHz	915 MHz	9dB	45 MHz	48°	56°	20dB
(B)MYA-9306	896-970 MHz	930 MHz	9dB	75 MHz	48°	56°	20dB
MYA-9309	896-970 MHz	930 MHz	10dB	75 MHz	52°	43°	20dB
MYA-91512RPC	896-940 MHz	915 MHz	11dB	45 MHz	40°	42°	20dB
(B)MYA-93012	896-970 MHz	930 MHz	11dB	75 MHz	40°	42°	20dB

Prefix "B" indicates black

MYG 900 MHz Series Welded Construction Yagi

General Specifications for MYG 900 MHz Series

Radiator Material:

3/8" solid 6061-T6 aluminum

Termination:

"N" female; fully enclosed- 16" pigtail w/ "N" male

Lightning Protection:

DC grounded

Wind Survival:

Fully enclosed- 100 mph; all others 125 mph

Maximum Mount Pipe Diameter:

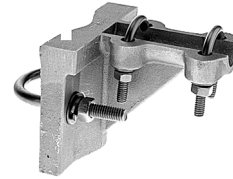
1 5/8"

Maximum Power:

150 watts

Nominal Impedance:

50 Ohms



MYK10



MYG-9309

Mechanical Specifications

MYG 900 MHz Series, Welded Element Yagi

Model #	Equivalent Flat Plate Area	Lateral Thrust @ Rated Wind	Bending Moment @ Rated Wind	Elements	Weight	Mounting Hardware (Included)	Boom Length	Boom Diameter
MYG-9303	.09 sq ft	5.9 lbs	4.2 ft-lbs	3	1.5 lbs	MYK10	17"	7/8"
MYG-9303ED	.23 sq ft	13.0 lbs	9.6 ft-lbs	3	2.1 lbs	MYK10	17"	7/8"
MYG-9306	.16 sq ft	9.0 lbs	10.6 ft-lbs	6	1.5 lbs	MYK10	28"	7/8"
MYG-9306ED	.29 sq ft	16.3 lbs	14.7 ft-lbs	6	2.1 lbs	MYK10	28"	7/8"
MYG-9306FE	1.80 sq ft	102.6 lbs	140.4 ft-lbs	6	13.0 lbs	Built In	31"	7/8"
MYG-9159	.18 sq ft	10.3 lbs	12.7 ft-lbs	9	1.5 lbs	MYK10	28"	7/8"
MYG-9159ED	.29 sq ft	16.3 lbs	14.7 ft-lbs	9	2.1 lbs	MYK10	28"	7/8"
MYG-9159FE	1.80 sq ft	102.6 lbs	140.4 ft-lbs	9	13.0 lbs	Built In	31"	7/8"
MYG-9309	.18 sq ft	10.3 lbs	12.7 ft-lbs	9	1.5 lbs	MYK10	28"	7/8"
MYG-9309ED	.29 sq ft	16.3 lbs	14.7 ft-lbs	9	2.1 lbs	MYK10	28"	7/8"
MYG-9309FE	1.80 sq ft	102.6 lbs	140.4 ft-lbs	9	13.0 lbs	Built In	31"	7/8"