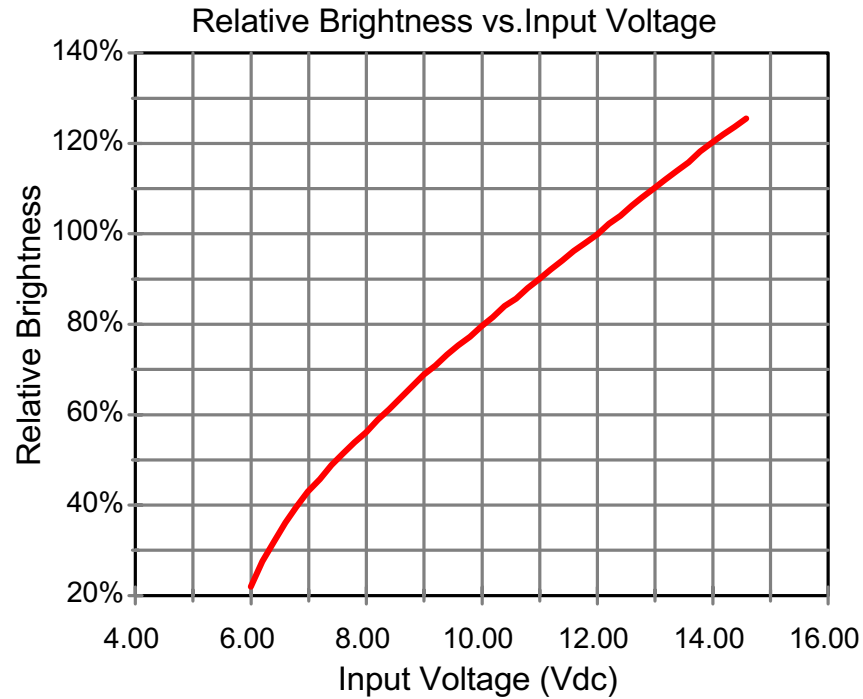


E1941



Endicott Research Group, Inc.
 2601 Wayne St., Endicott NY 13760
 607-754-9187

Made in U.S.A.



Endicott Research Group, Inc.

2601 Wayne St., Endicott NY 13760
 607-754-9187 Fax 607-754-9255
<http://www.ergpower.com>

Specifications and Applications Information

9/13/99

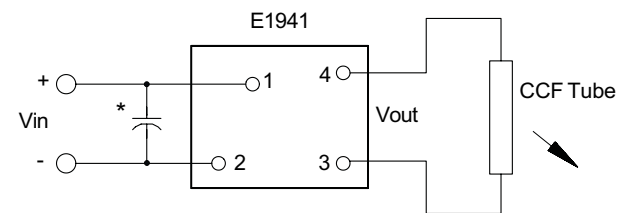
Preliminary

The E1941 (E200II Series) dc to ac inverter is specifically designed to power the Hitachi LMG5320XUFC LCD display to a moderate brightness level from a +12 volt dc source.

The E1941's small size, encapsulated package and low input power requirements (typically 1.8 watts) makes it the ideal power source for battery applications where small size, high efficiency and reliability are critical.

This inverter is designed to satisfy the most common cold-cathode lighting requirements for the Hitachi LMG5320XUFC display. Custom units, providing different inputs, outputs or package refinements are available.

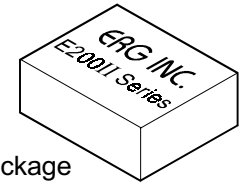
Connection Diagram



* Input bypass capacitor may be required (10uf - 100uf)

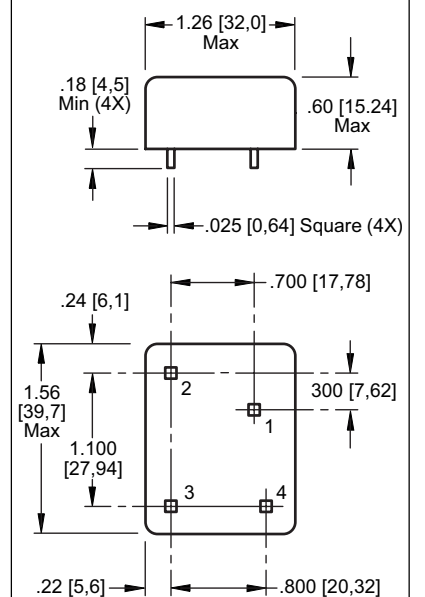
E1941

Single Tube
DC to AC Inverter



E200II Package

Package Configuration



- 1. Vin(+)
- 2. Vin(-)
- 3. Vout(AC)
- 4. Vout(AC)



E1941

Absolute Maximum Ratings

Rating	Symbol	Value	Units
Input Voltage Range	Vin	-0.3 to +13.2	Vdc
Operating Temperature	To	0 to +70	°C
Storage Temperature	Tstg	-40 to +85	°C

Recommended Operating Conditions

Rating	Symbol	Value	Units
Input Voltage	Vin	+6.0 to 13.2	Vdc

Electrical Characteristics

Unless otherwise noted Vin = 12.00 Volts dc and Ta = 25 °C

Characteristic	Symbol	Min	Typ	Max	Units
Input Current	Iin	-	.17	.20	Adc
Operating Frequency	Fo	30	35	40	KHz
Minimum Output Voltage	Vout (min)	1000	-	-	Vrms
Efficiency	η	-	76	-	%
Output Current	Iout	-	5.0	-	marms
Output Voltage (when Powering a Load Simulating the characteristics of the referenced display)	Vout	-	310	-	Vrms

After tube has been allowed to warm-up for 5 minutes

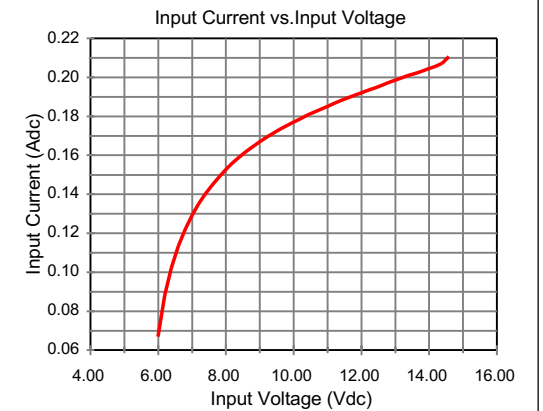
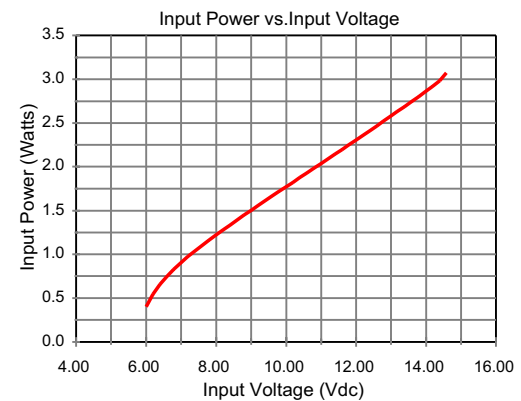
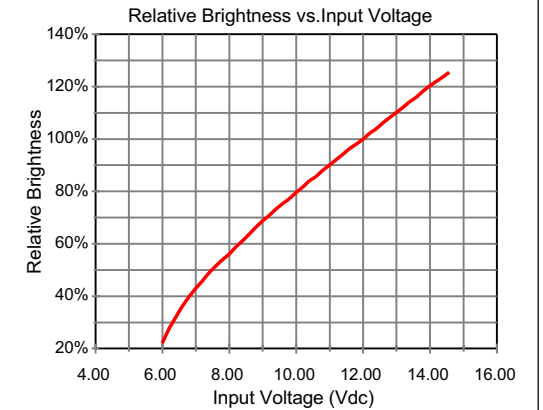
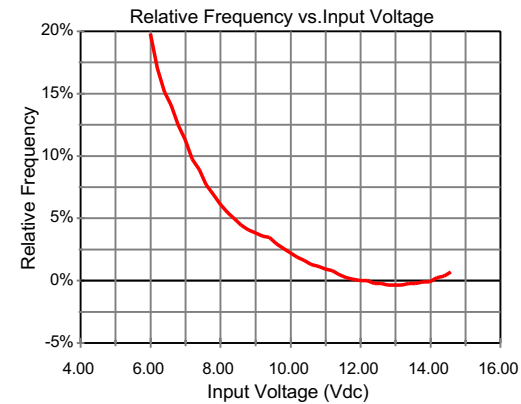
Specifications subject to change without notice



Endicott Research Group, Inc.

E1941

Typical Performance Curves



Endicott Research Group, Inc.